

Ford IDS – 2008 Ford Crown Victoria P71 Police Interceptor

Archived from: <http://www.idmsvcs.com/2vmod/fordids/screenshots/index.html>

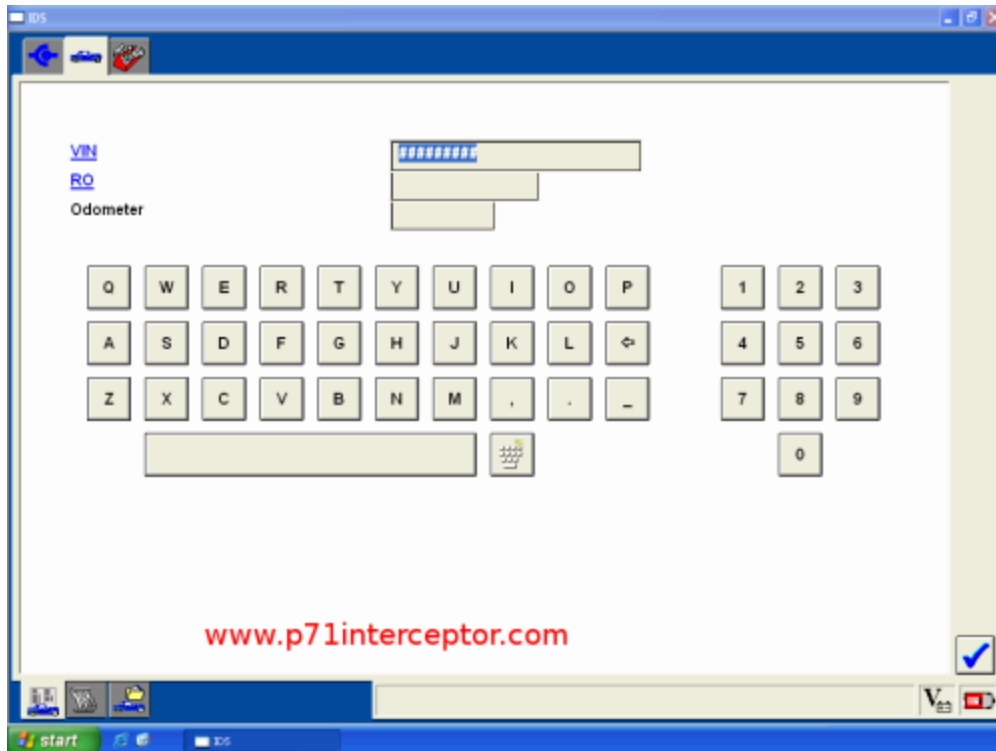
The model year 2005 and later ford crown victoria police interceptors are appearing at auction and being purchased by their new owners. Often, these car are put into civilian use where cruise control and having the domelights illuminate when the doors are opened is desired.

Previously, enabling the interior domelights involved physically seperating a connector under the dashboard. And installing speed control involved physically installing a cruise control servo under the hood. But on 2006+ crown victorias enabling the domelights requires use of an ids laptop/vcm at a ford dealership to electronically change the module preferences in the lighting control module flash memory. And on the 2005+ drive-by-wire crown victorias, retrofitting speed control also requires use of an ids laptop/vcm to reprogram the vehicles pcm with it's speed control enabled counterpart.

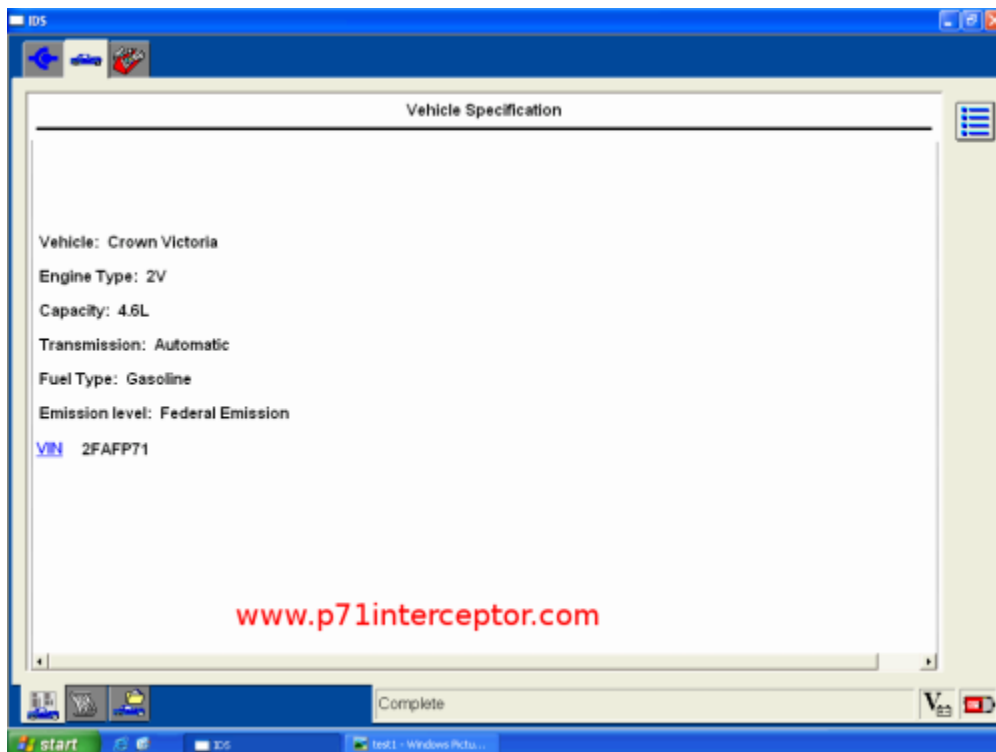
Some people with wrecked spare parts cars available might wonder about swapping a speed control enabled pcm into their crown vic instead of using an ids laptop. This can work, but pcms are year specific and your particular pcm calibration must be compatible with the remainder vehicles hardware (i.e. maf sensor, transmission model, fuel injectors, etc). Also, many states now read the vin data from the pcm during the annual smog emissions/safety check. If the vin stored in the pcm doesn't match the one on the vehicle's registration, the car will fail it's smog check and can no longer legally be driven on public roads.

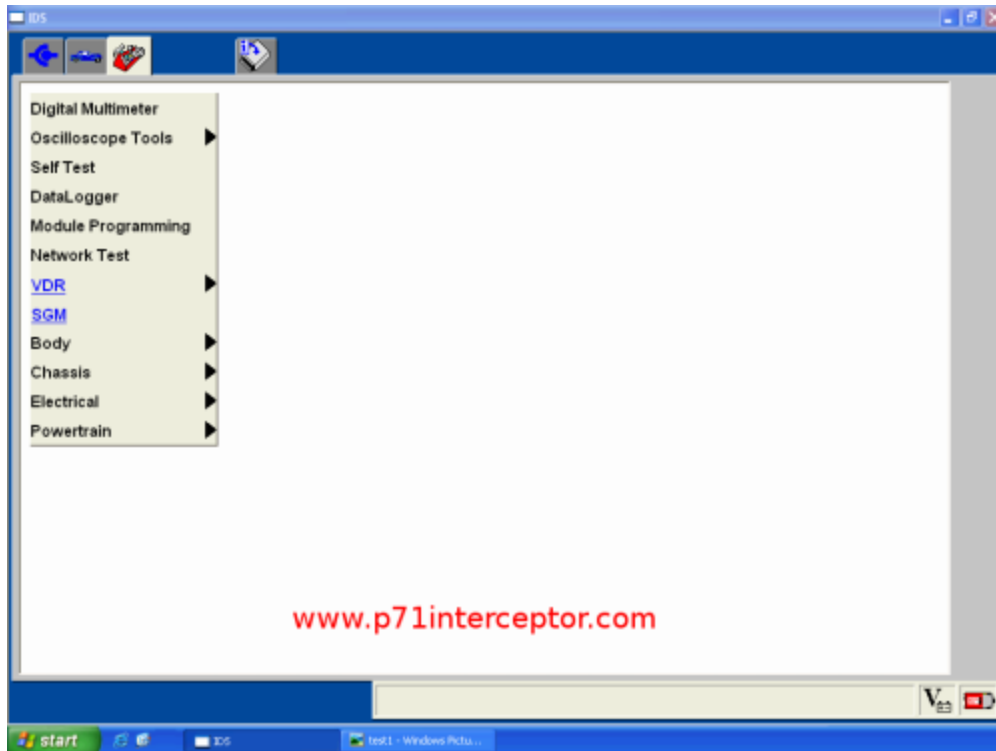
For this demonstration of the ids, a 2008 crown victoria police interceptor with the IDS R58 software is being used.

This is the startup screen. Some shops enter data in the Repair Order (RO) and Odometer fields, others just leave it blank.

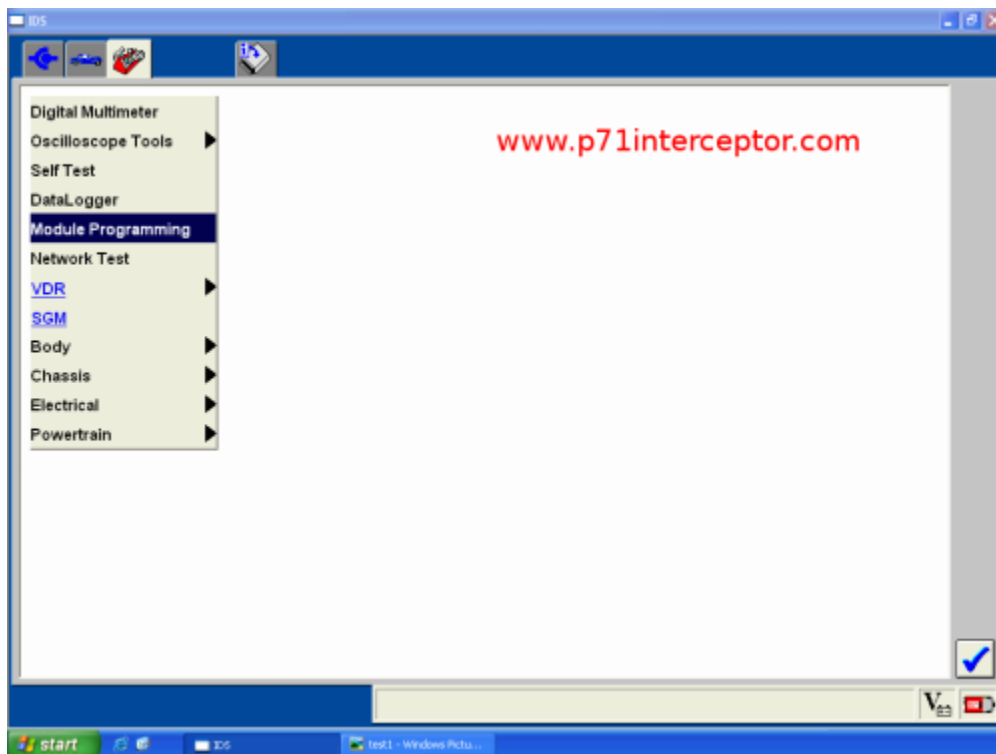


After clicking on the ok button, this screen appears.

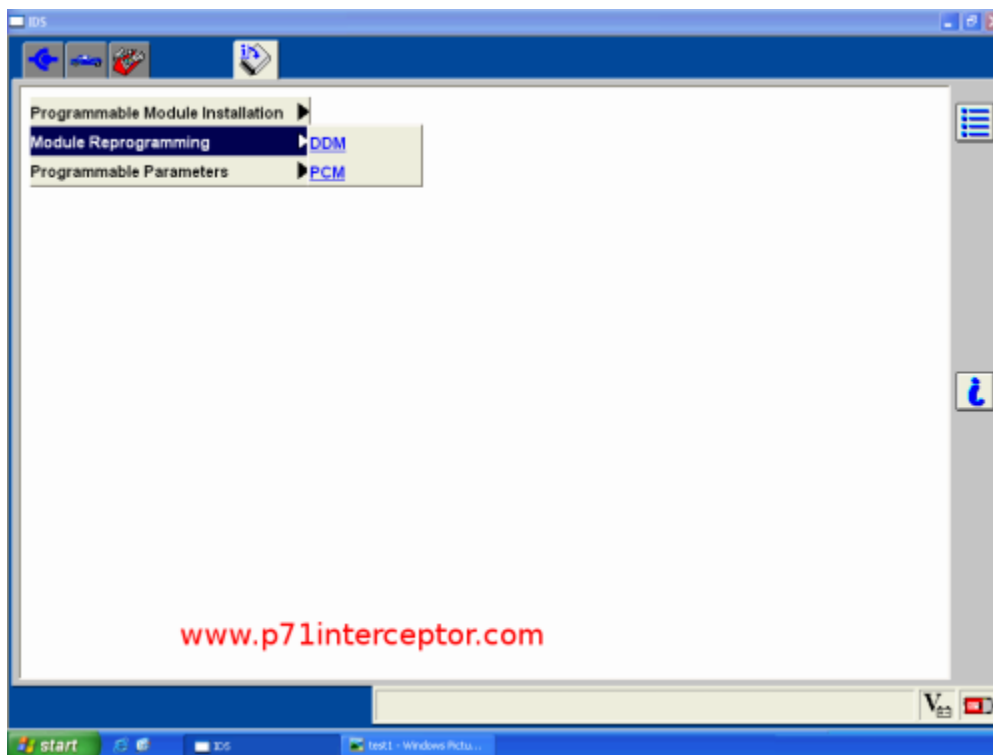
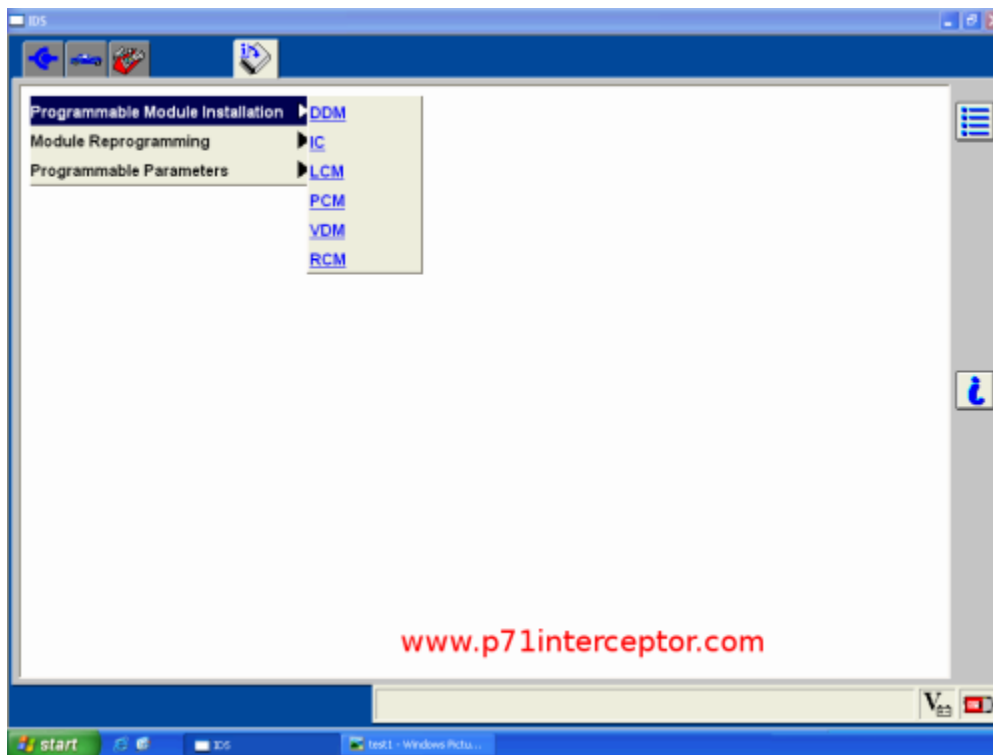




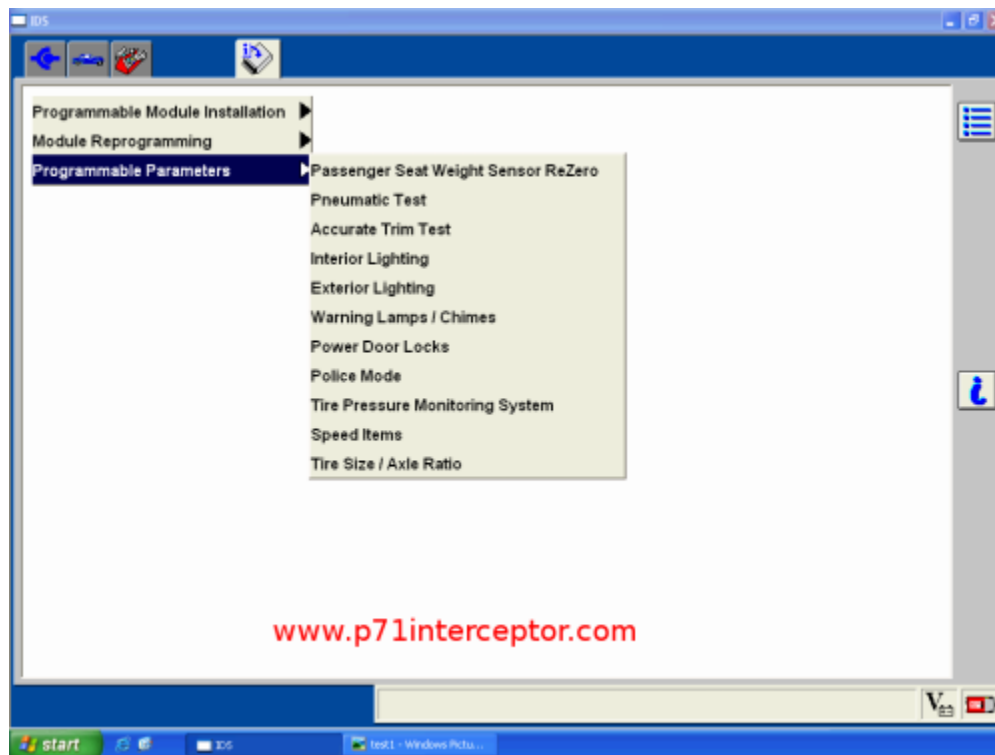
For our project, we want to select "Module Programming" from the main menu



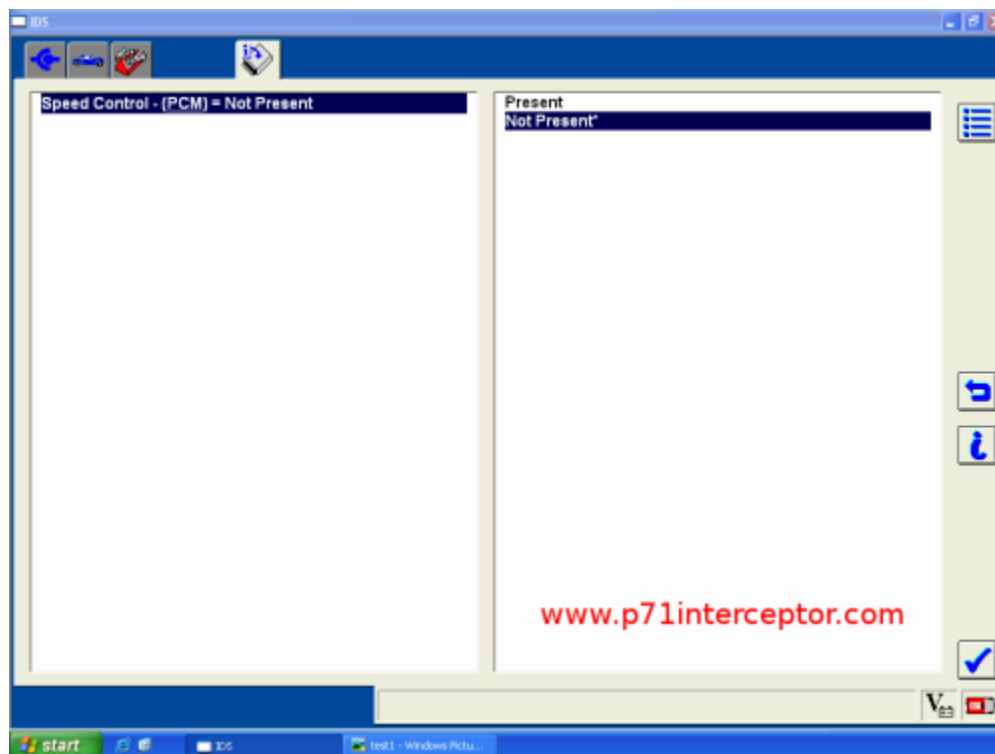
Which brings us to a screen with multiple sub-menus



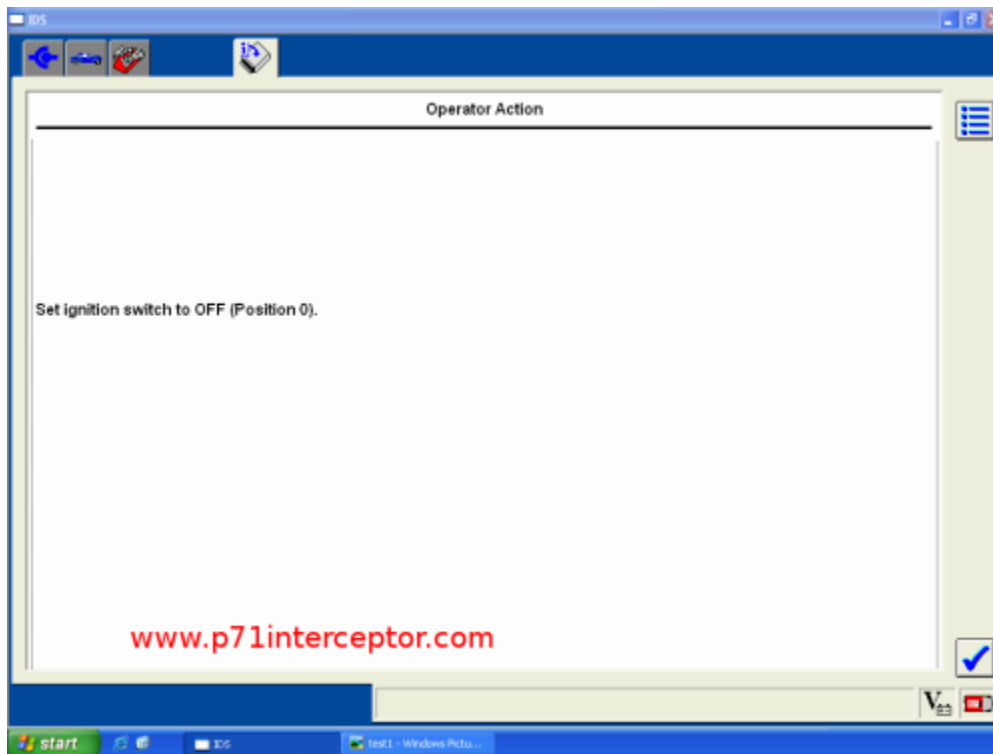
And finally, the "Programmable Parameters" menus that we're after for our domelight and speed control project



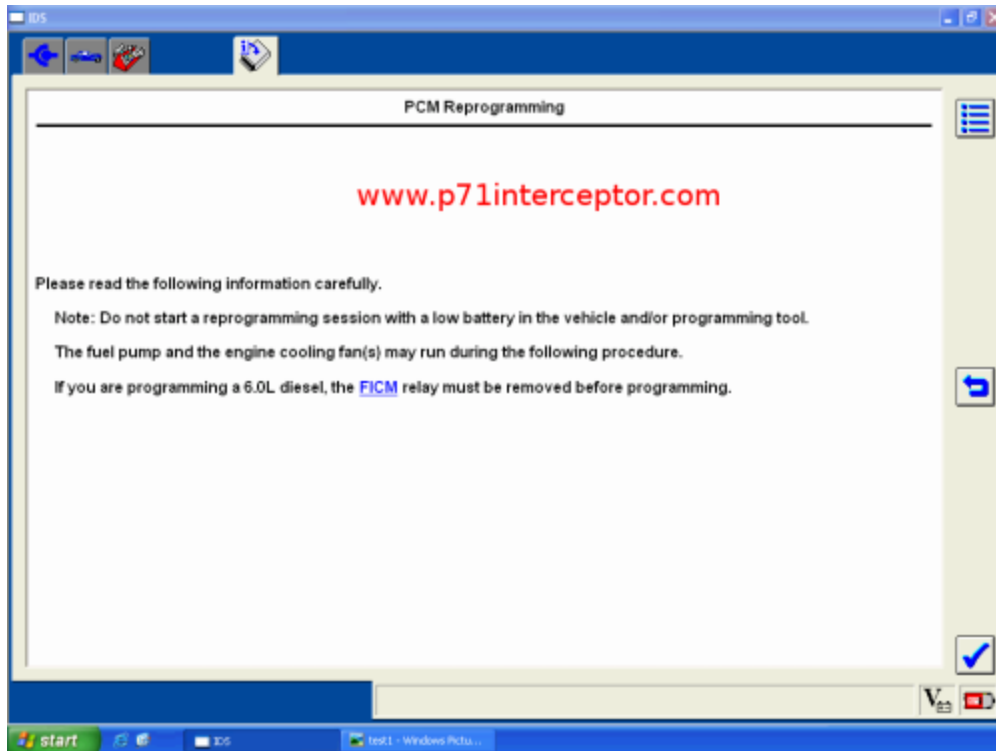
After clicking on "Speed Items" from the menu, this screen appears.



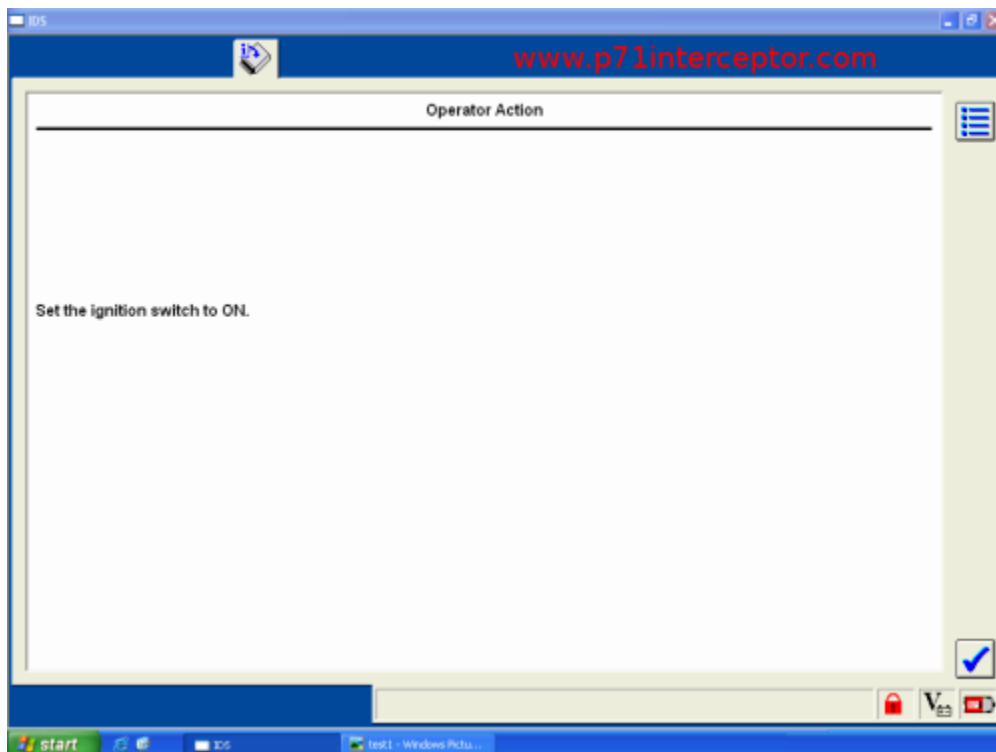
This particular police cruiser didn't have factory installed cruise control. So we're going to enable it by clicking on "Present"



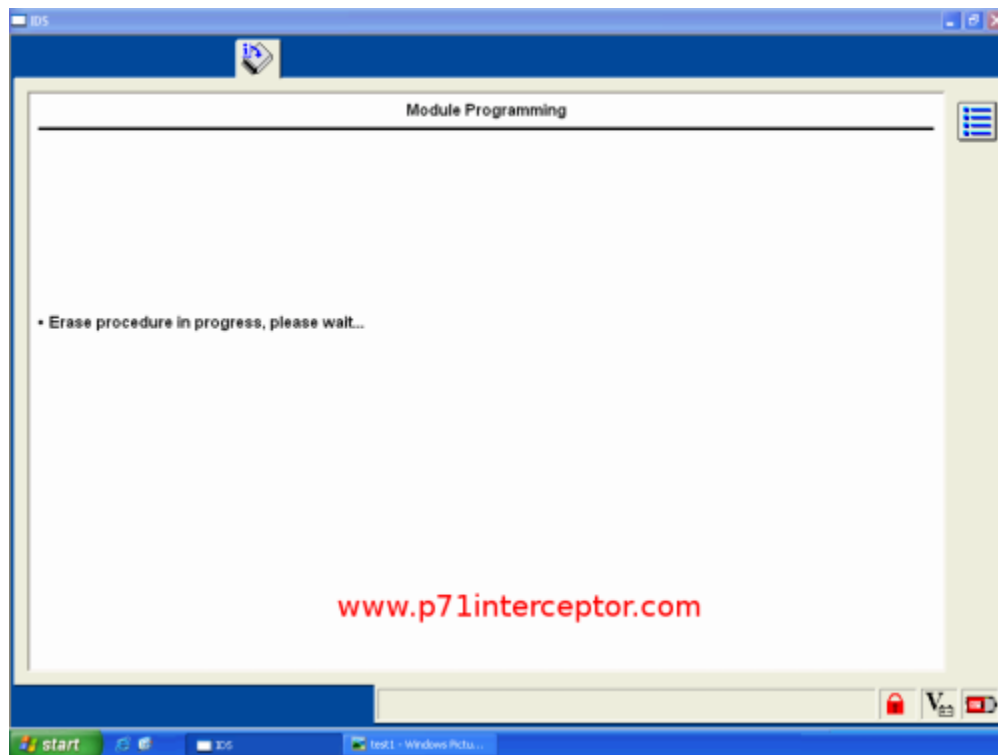
Make sure that your vehicle has a fully charged battery because bad things will happen if the battery runs out in the middle of reprogramming the pcm. To fully charge the battery, you could take a couple hour road trip on the highway. You could also leave an external battery charger installed connected to the battery for a few hours. Note that in some situations like slow city driving with the headlights on, radiator fan spinning, interior climate control fan spinning, and the rear window defroster on that you could actually be discharging the battery as you drive because the alternator couldn't keep up with all of the electrical demand.



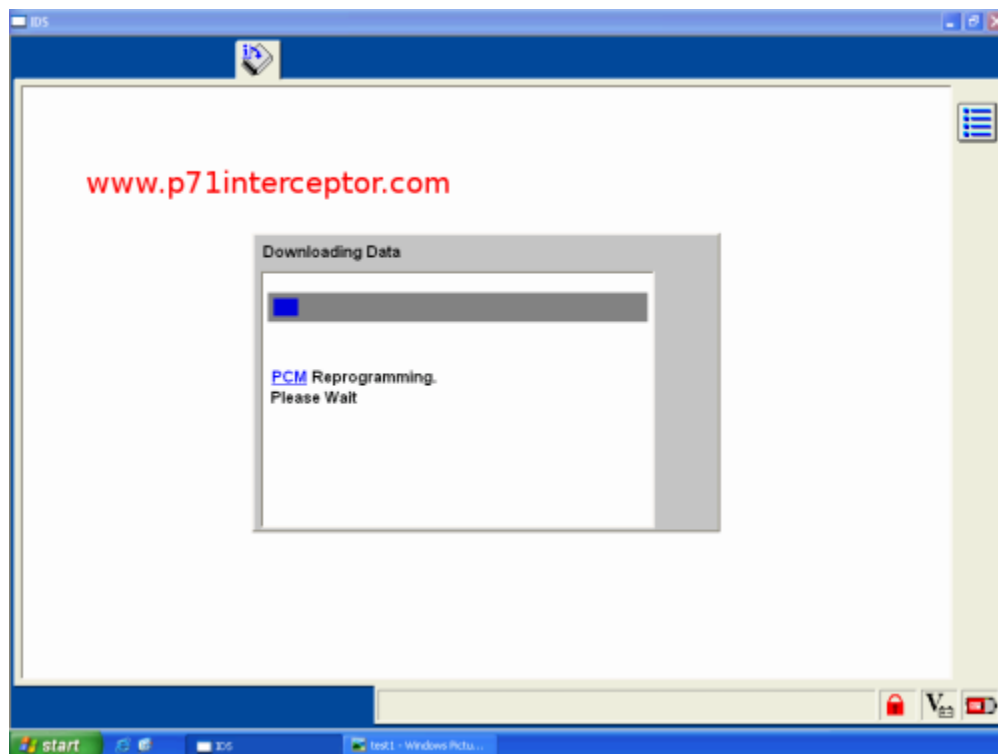
Turn the ignition key to the run position, but do not start the engine

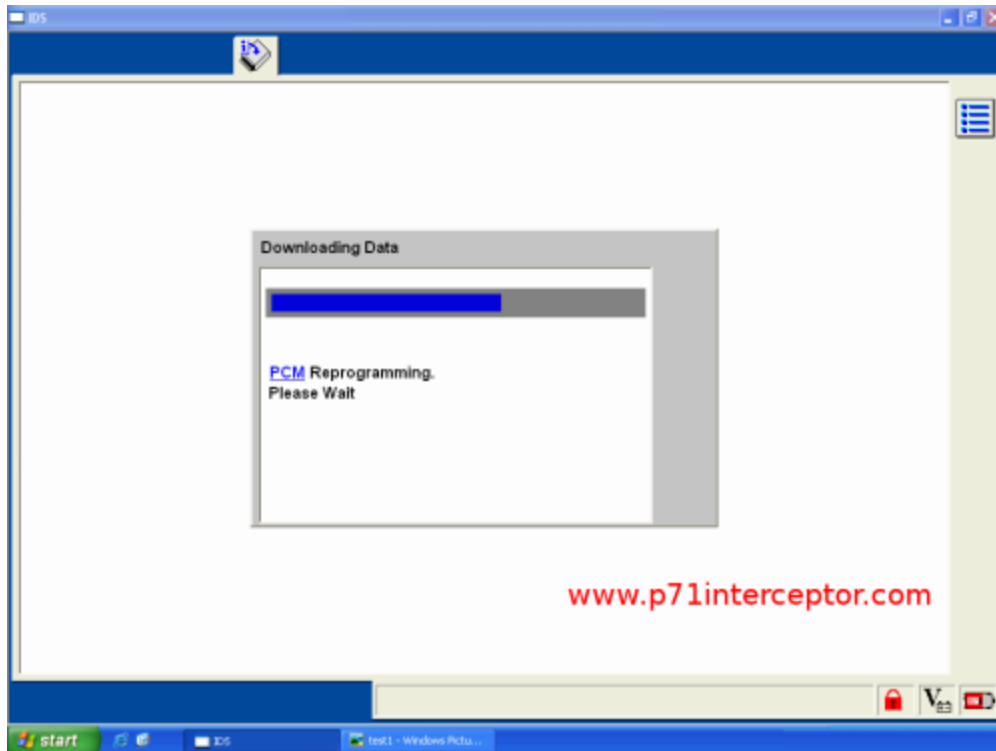


The powertrain control module programming is now being erased

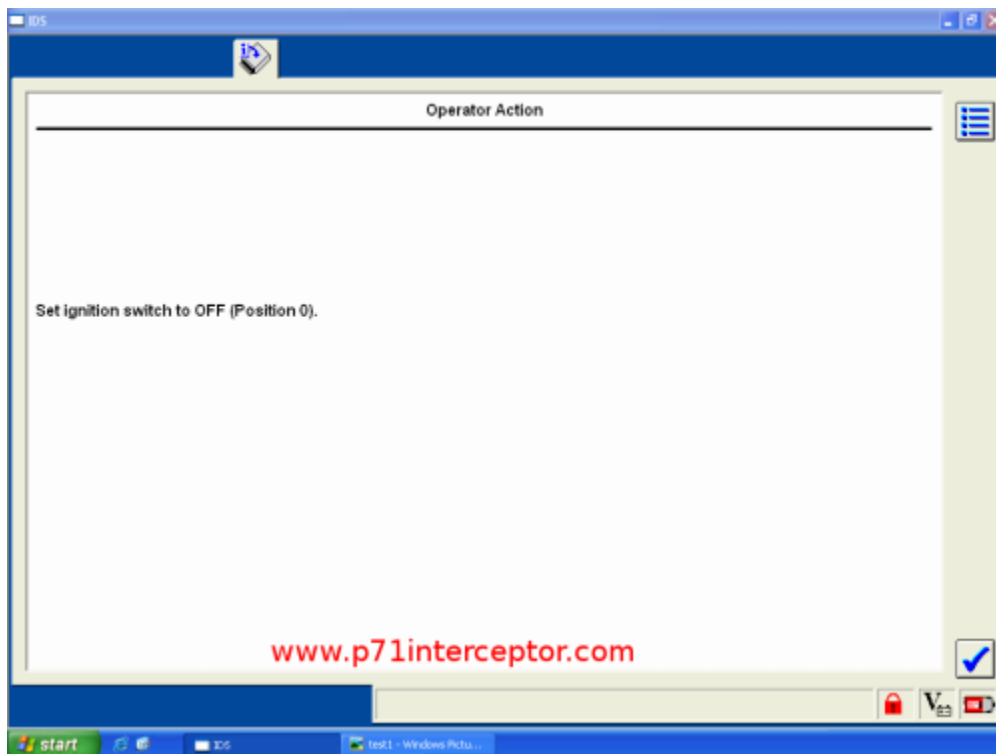


The process takes a few minutes

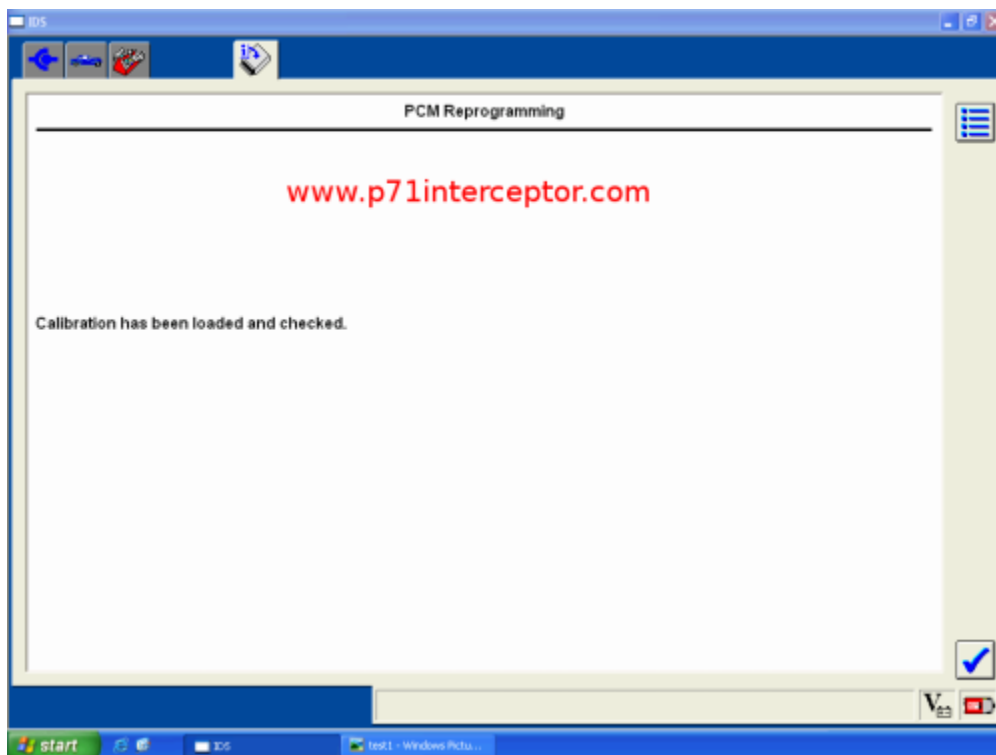
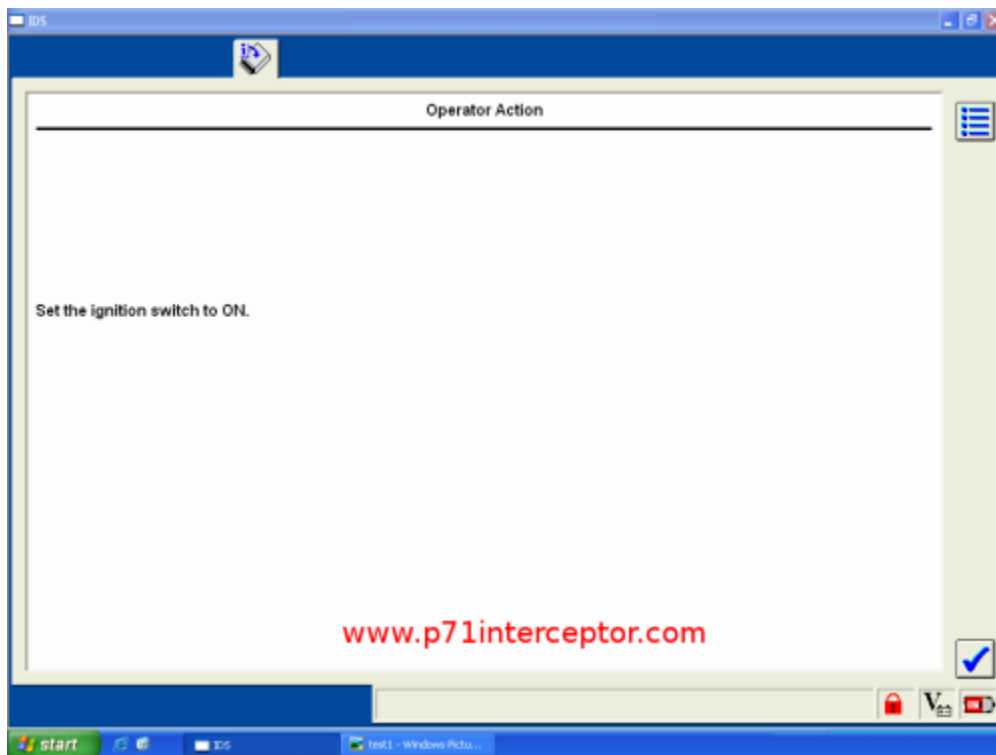




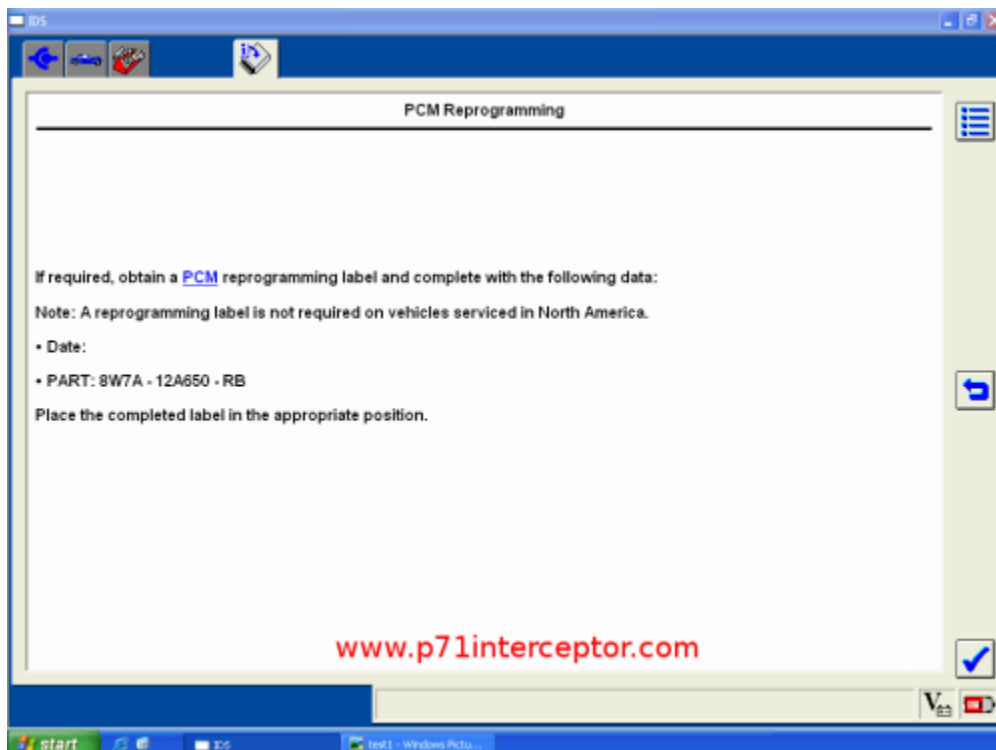
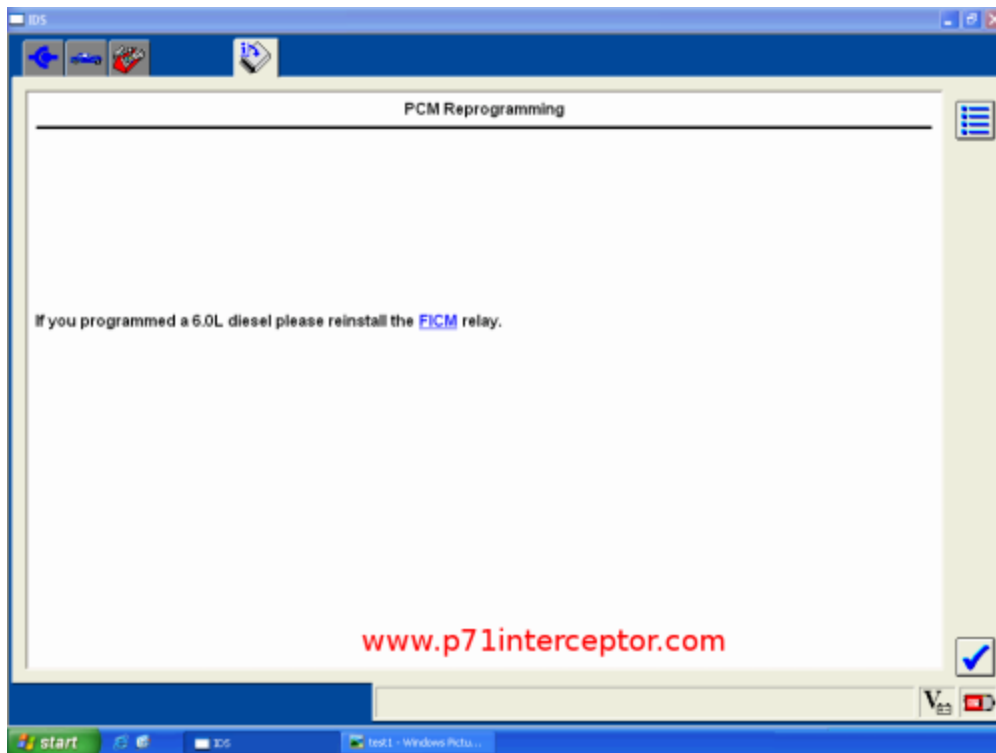
Now it's time to turn the ignition key again



And yet again



There was never a diesel crown vic, so do not worry about the ficm relay

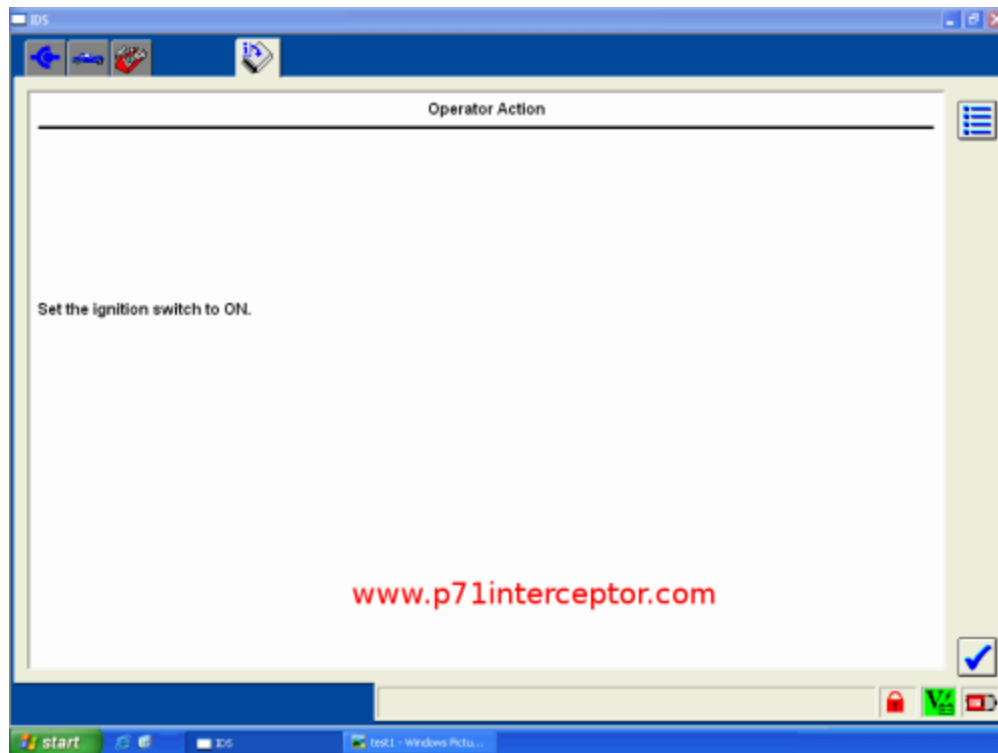


Now, cross your fingers and hope that the engine actually starts

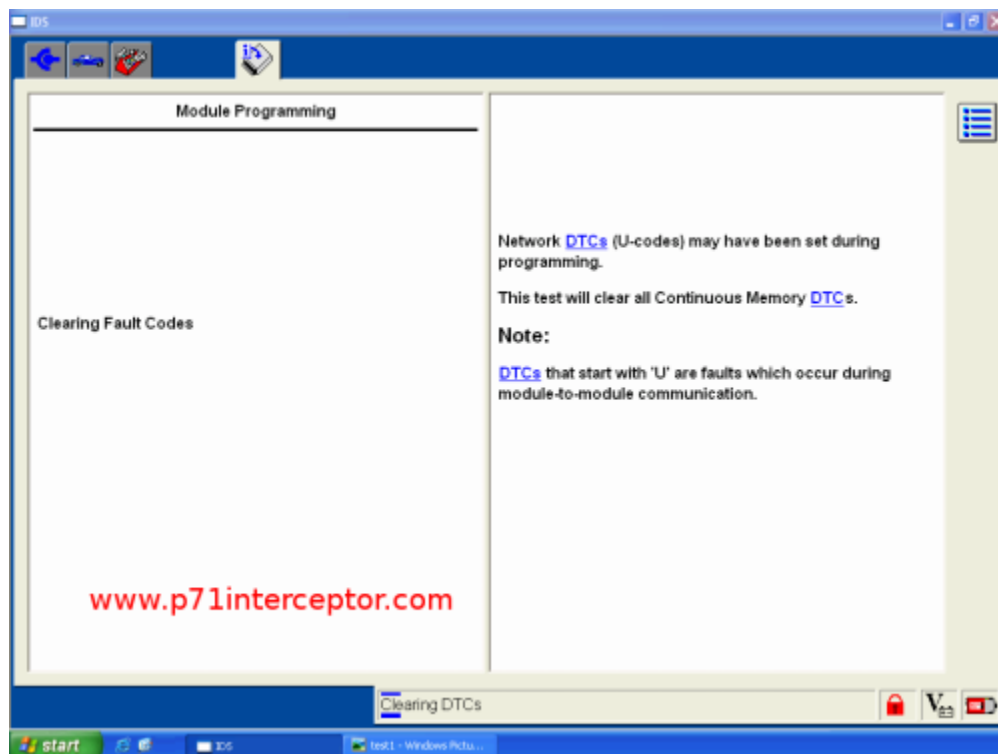


Time to turn the ignition key again

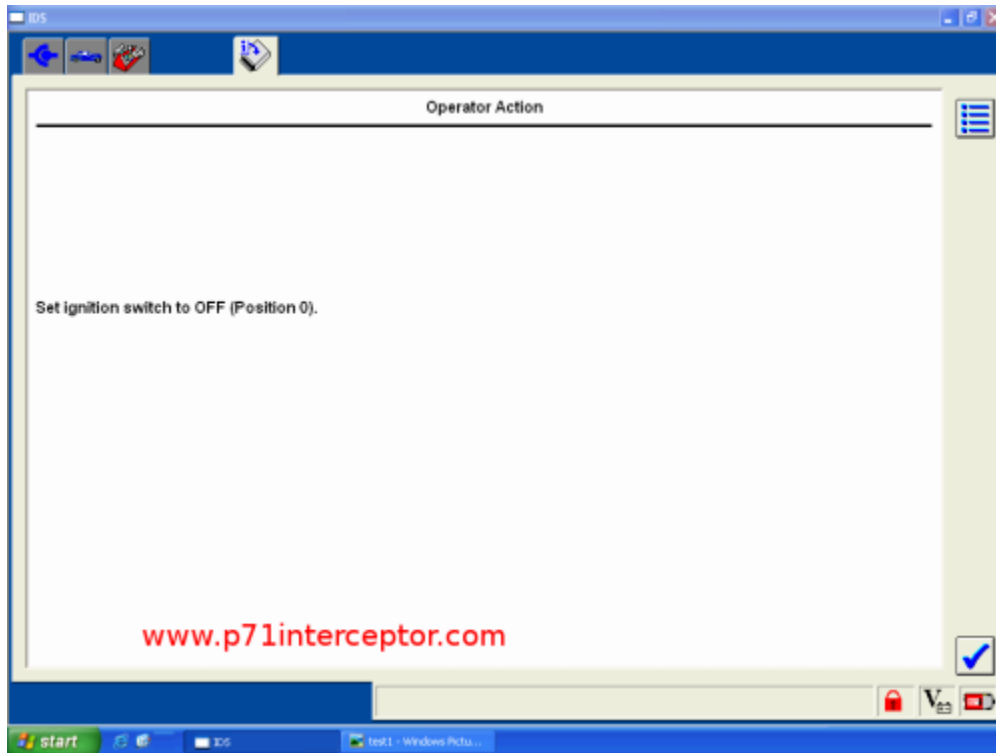




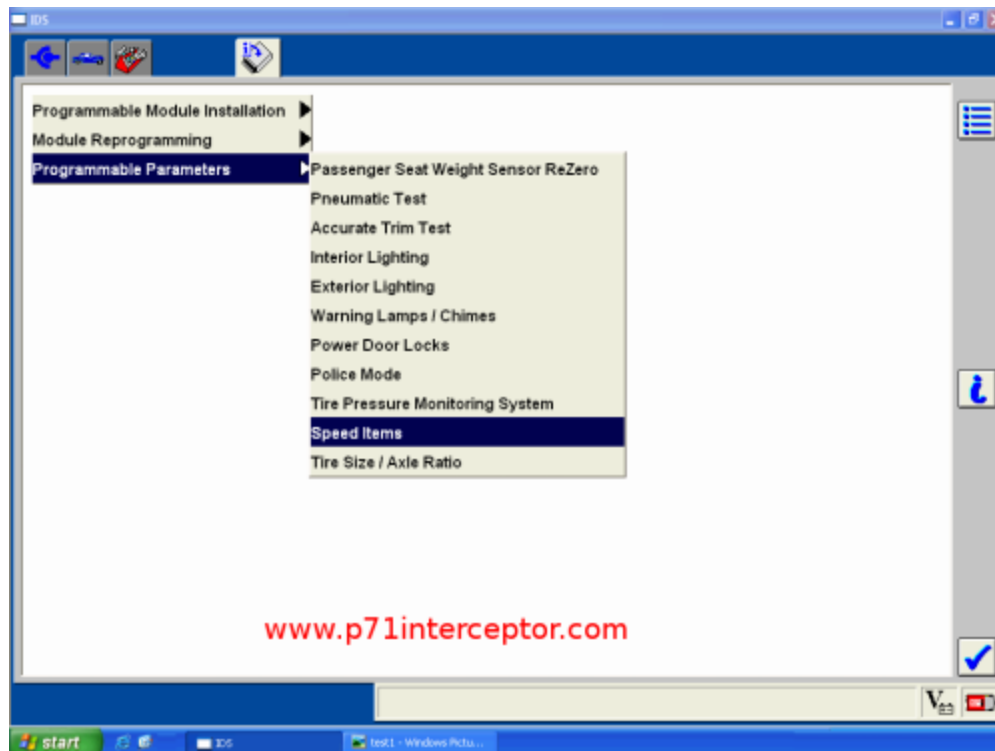
And now it's time to clear any fault codes that we might have generated during the pcm reprogramming



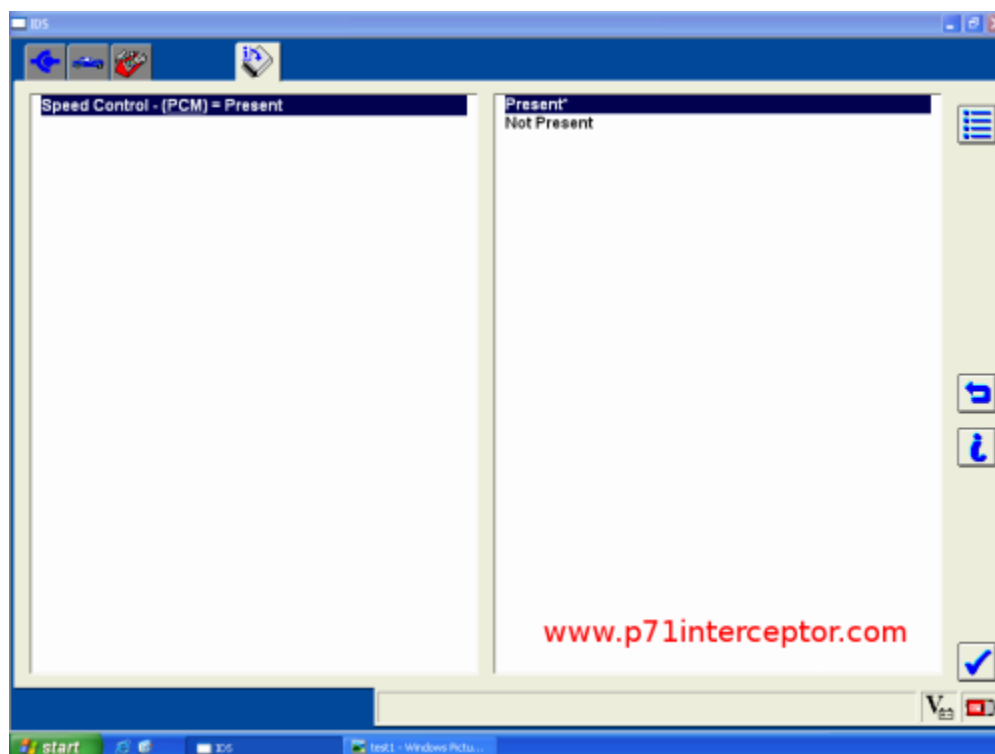
And turn the ignition key yet again



Now that the pcm reprogramming is complete, let's double check the status of the speed control

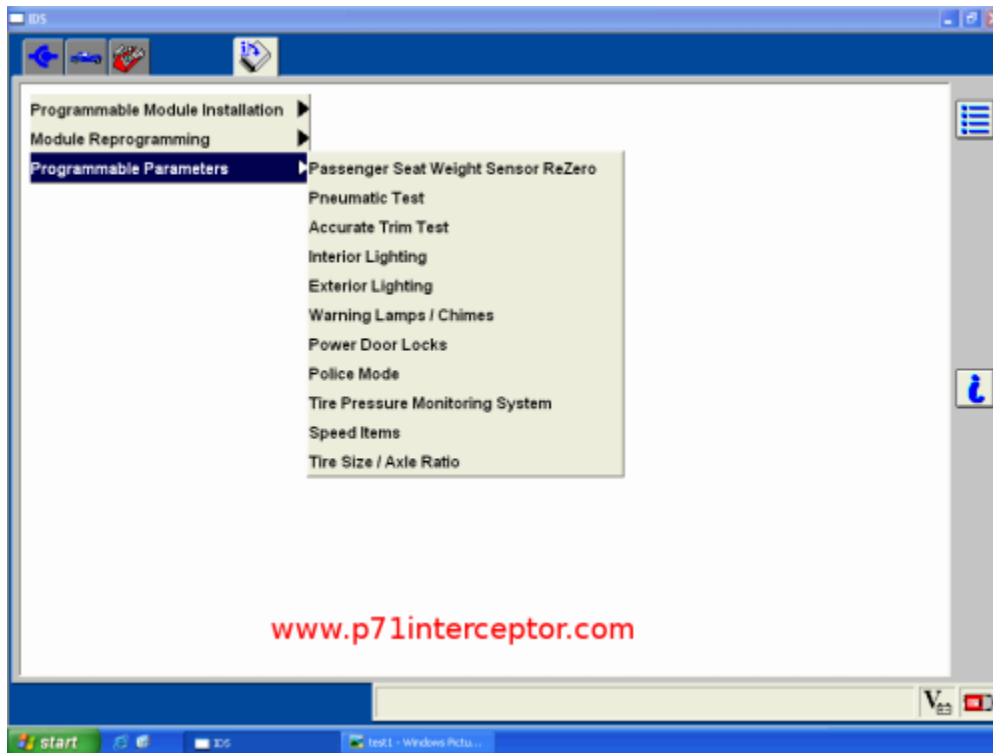


And now speed control is present. If we have a new steering wheel with the cruise switches already installed, we should be able to utilize cruise control now.



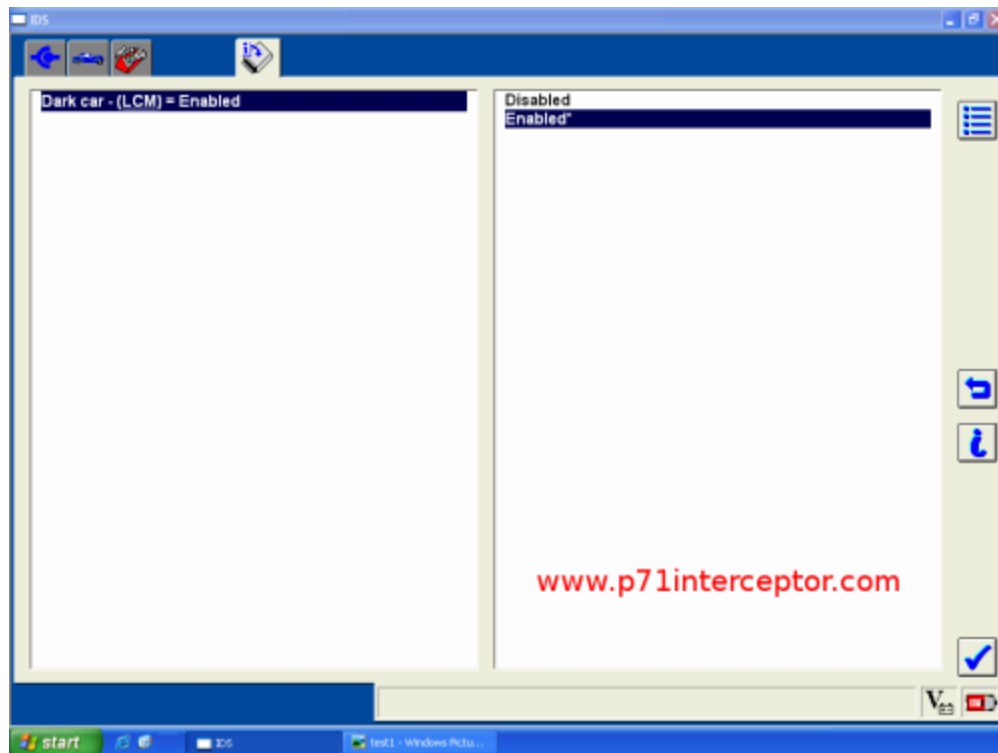
While we've got the car, lets disable police dark mode so that the dome lights will illuminate when the doors are opened.

From the menu select "Interior Lighting"

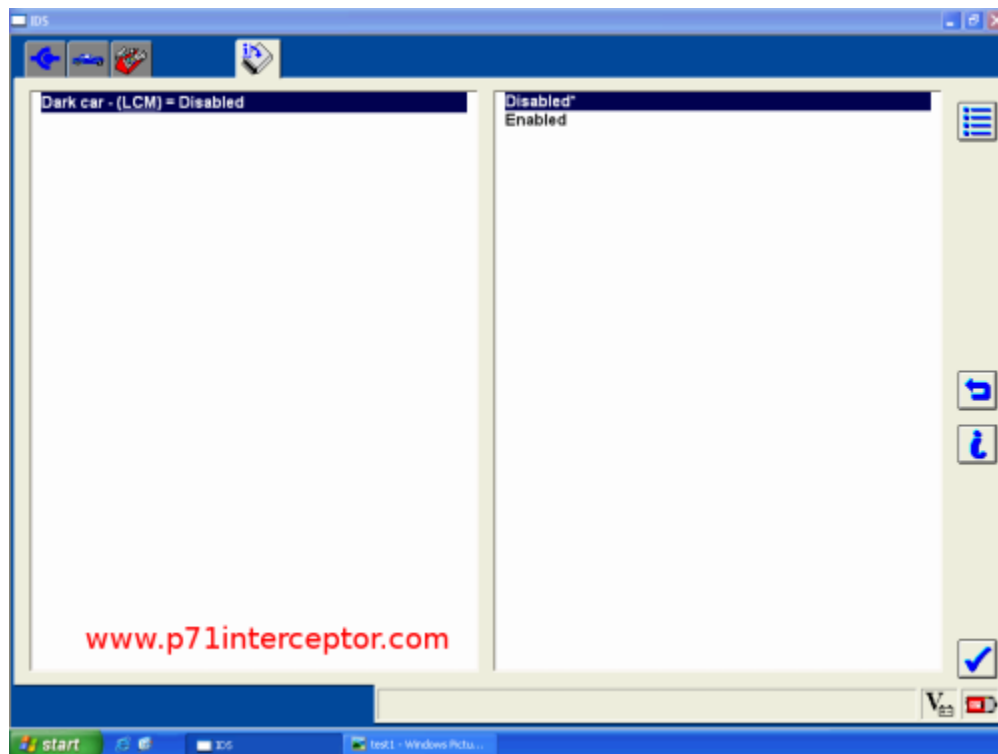


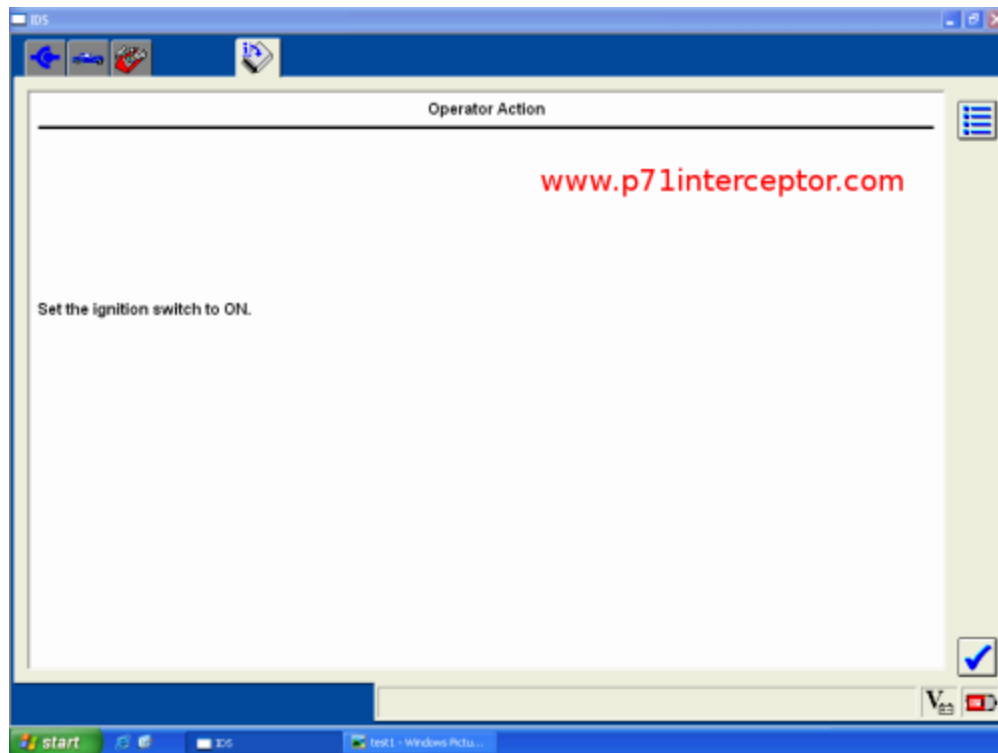
Which will bring up this screen

Note: 2005 and earlier crown vics will not have this option

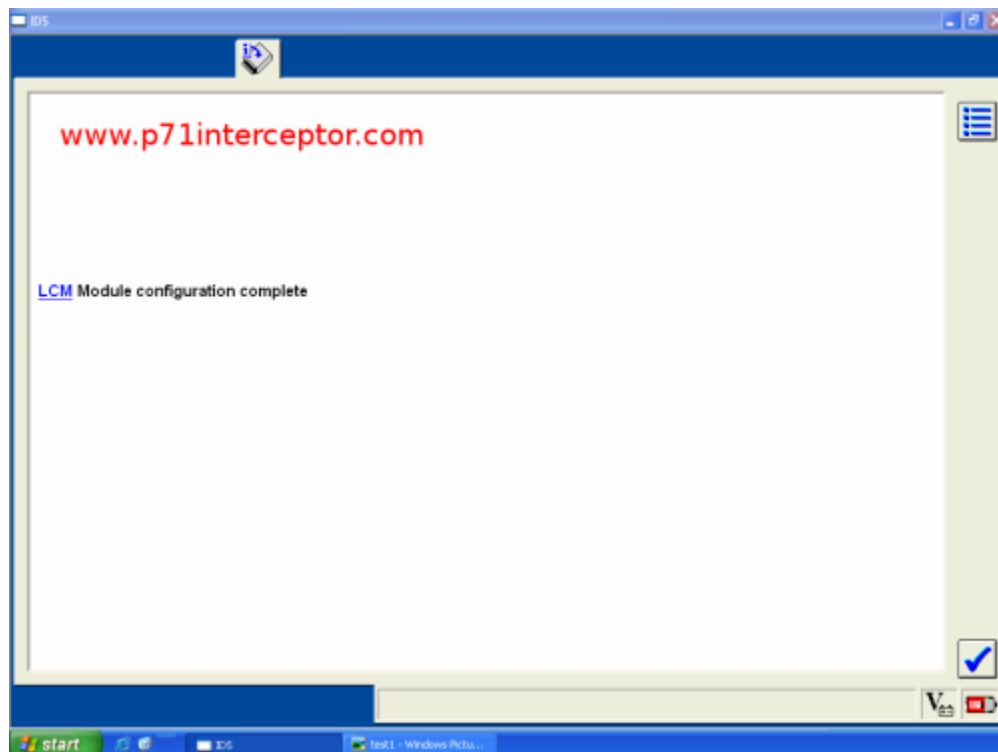


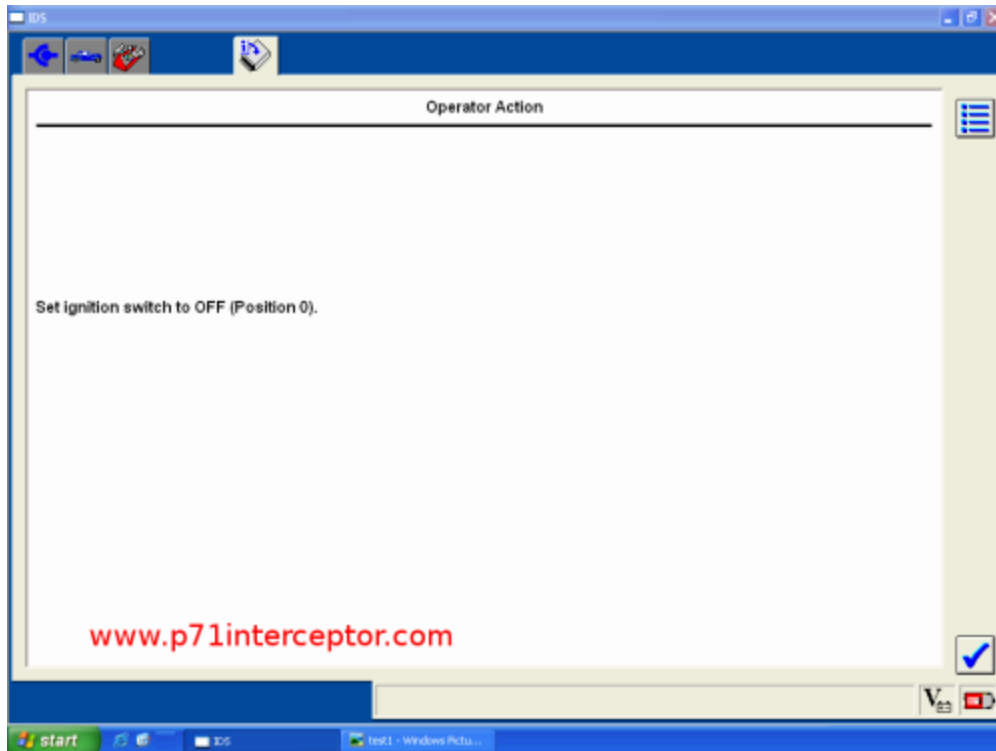
Now click on disabled



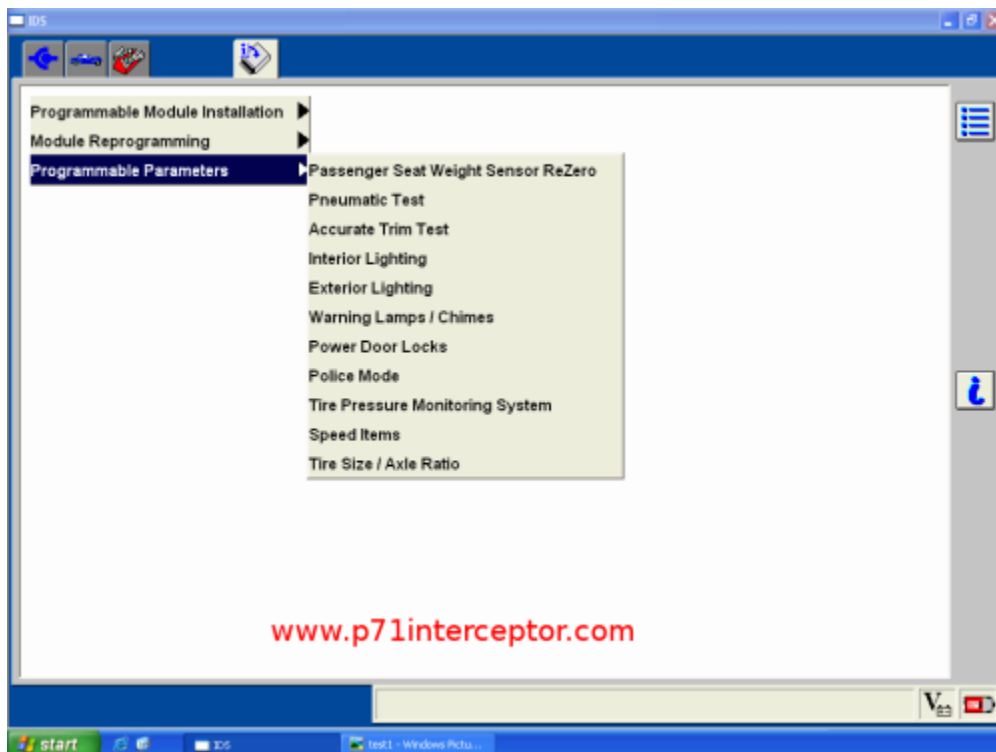


LCM = Lighting Control Module





Let's take a look at the Warning Lamps / Chimes screen

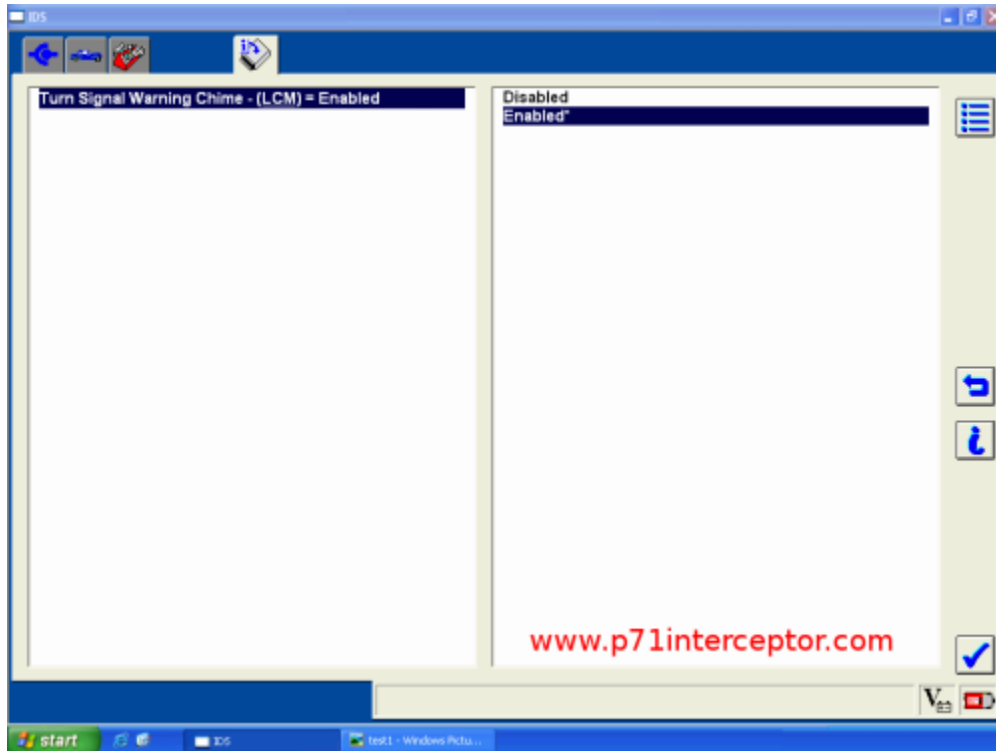


For police use, you will probably want this feature disabled. For civilian use, you can

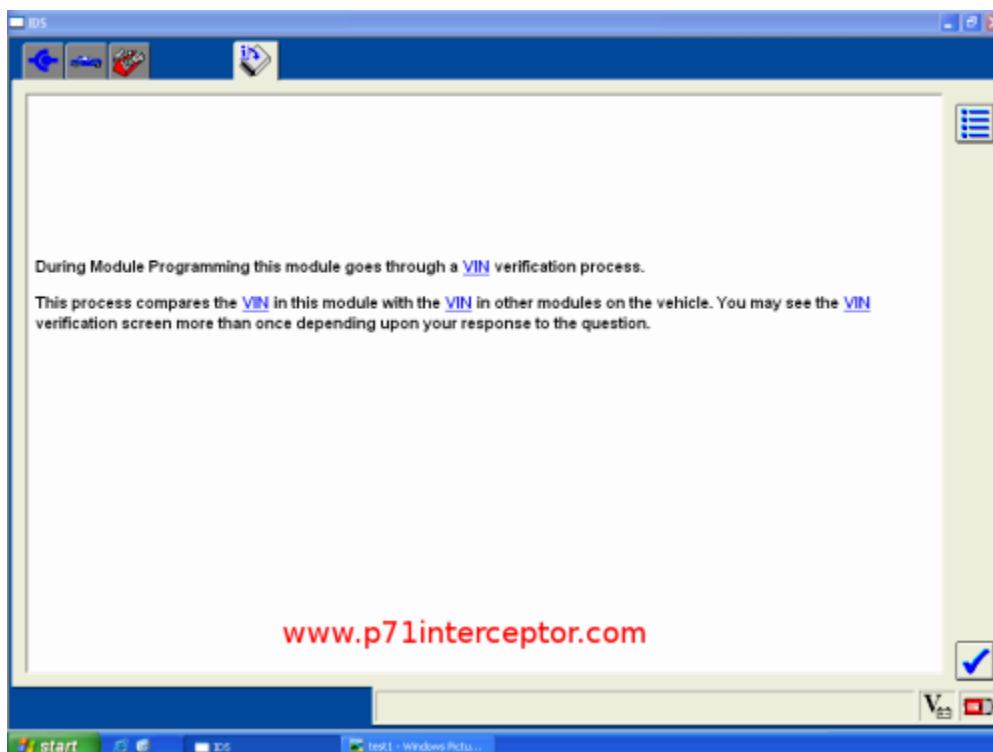
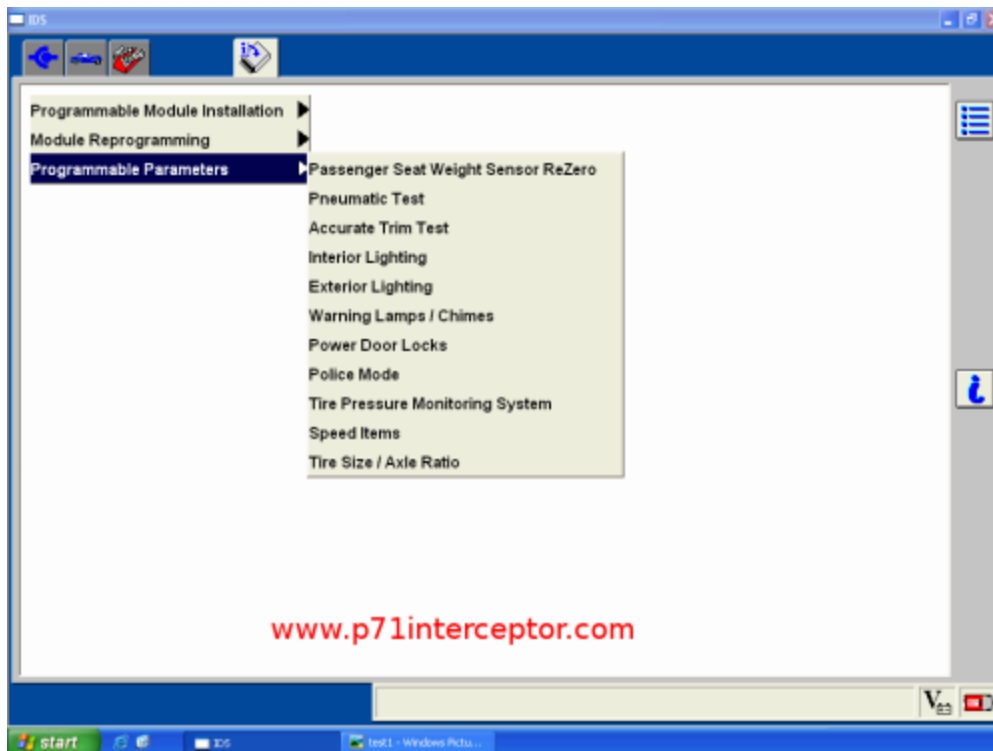
enable it if you'd like.

Turn Signal Warning Chime

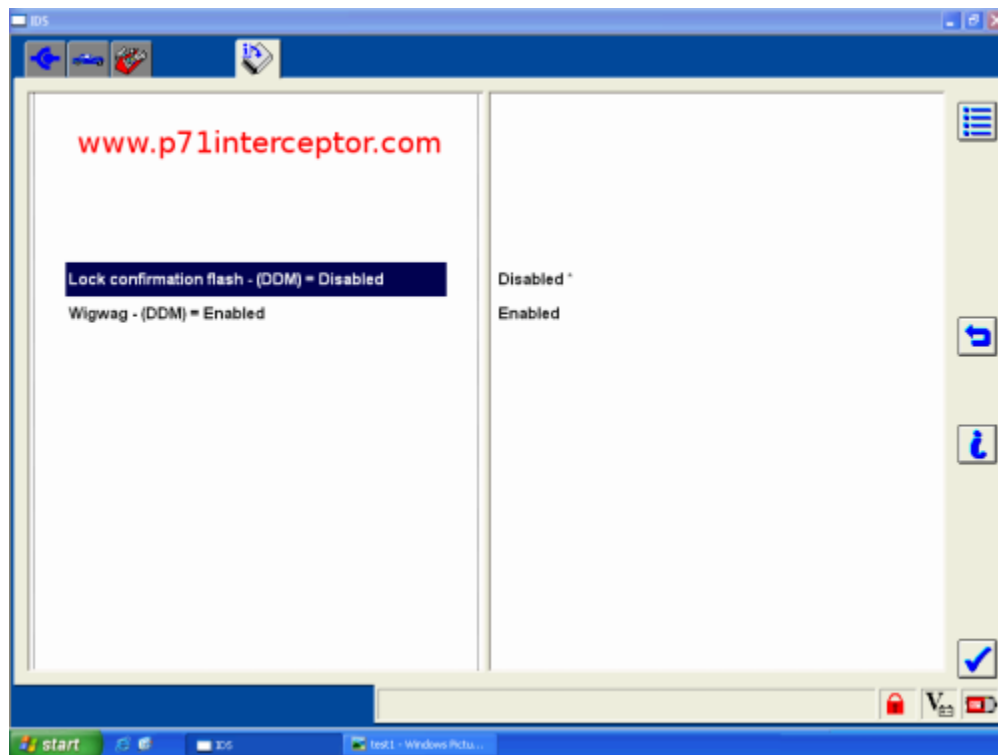
The turn signal warning chime sounds when the vehicle is driven in excess of 1/2 mile with the right or left turn signal active continuously.



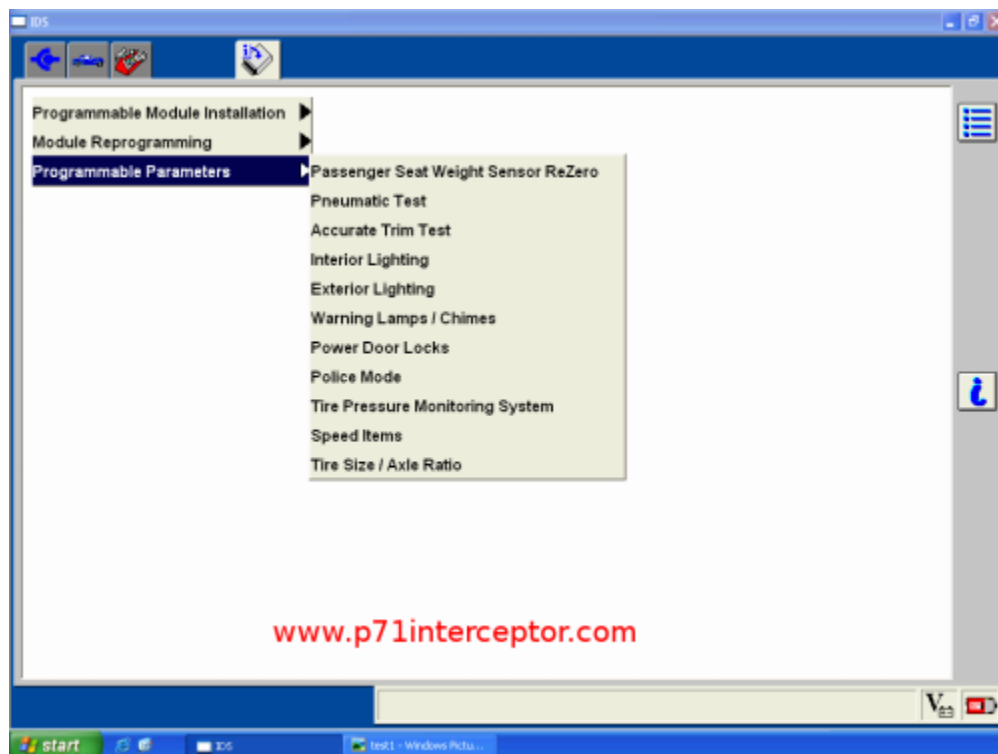
Let's take a look at the "Police Mode" screen



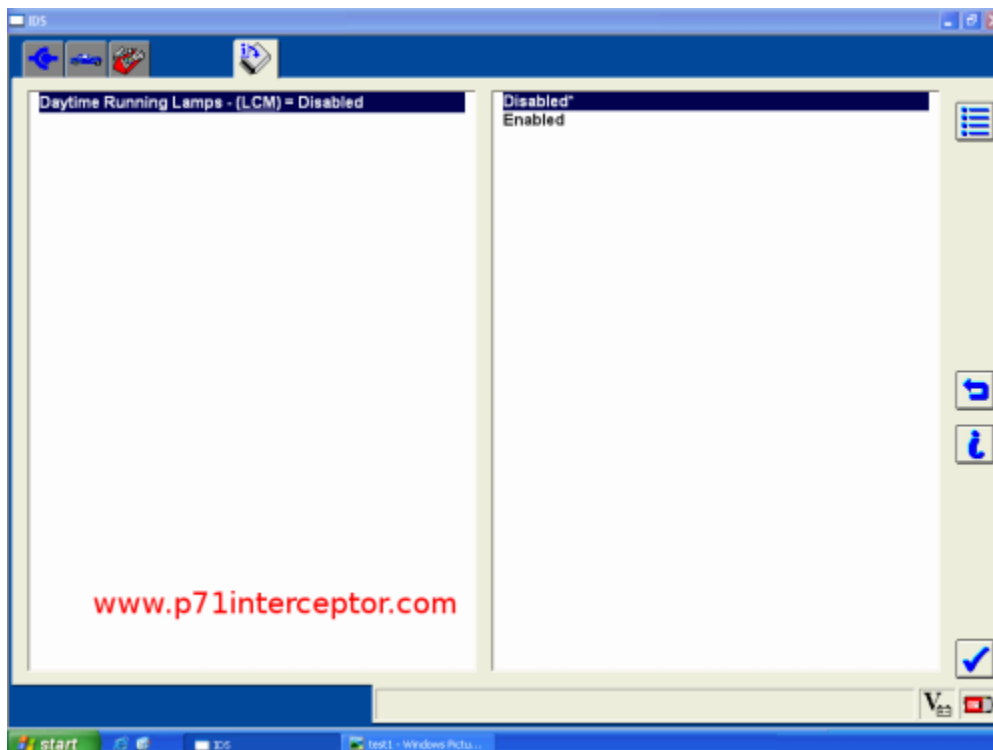
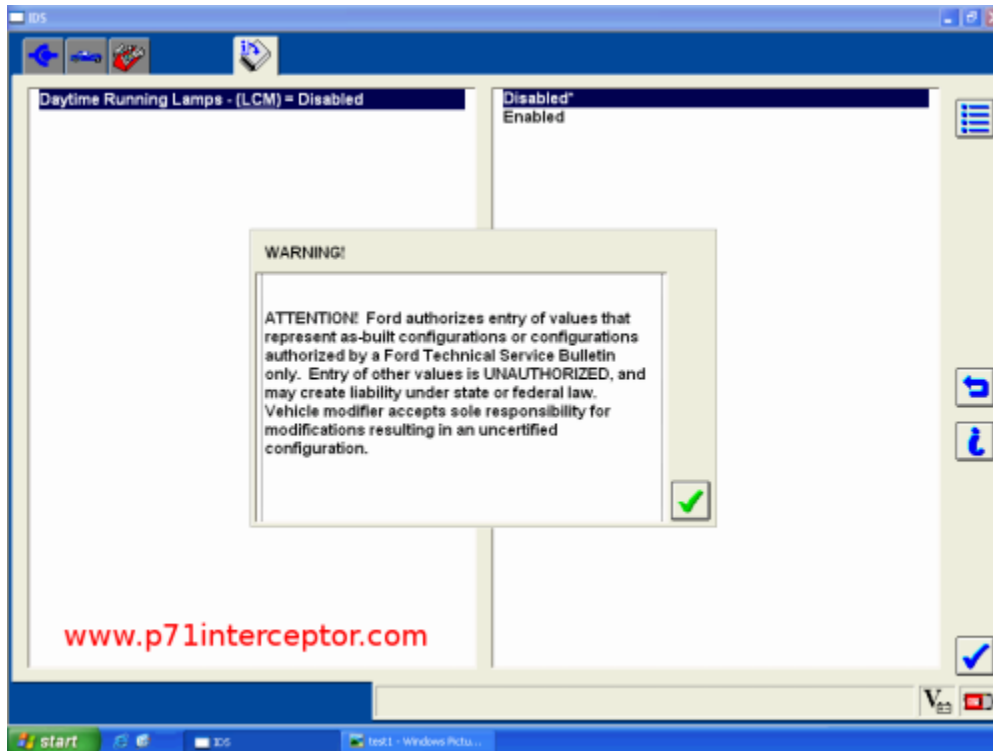
Do not enable the wig-wag option unless you have the wig-wag module present under the hood. Otherwise, you may have trouble activating the headlight highbeams from the steering column switch.



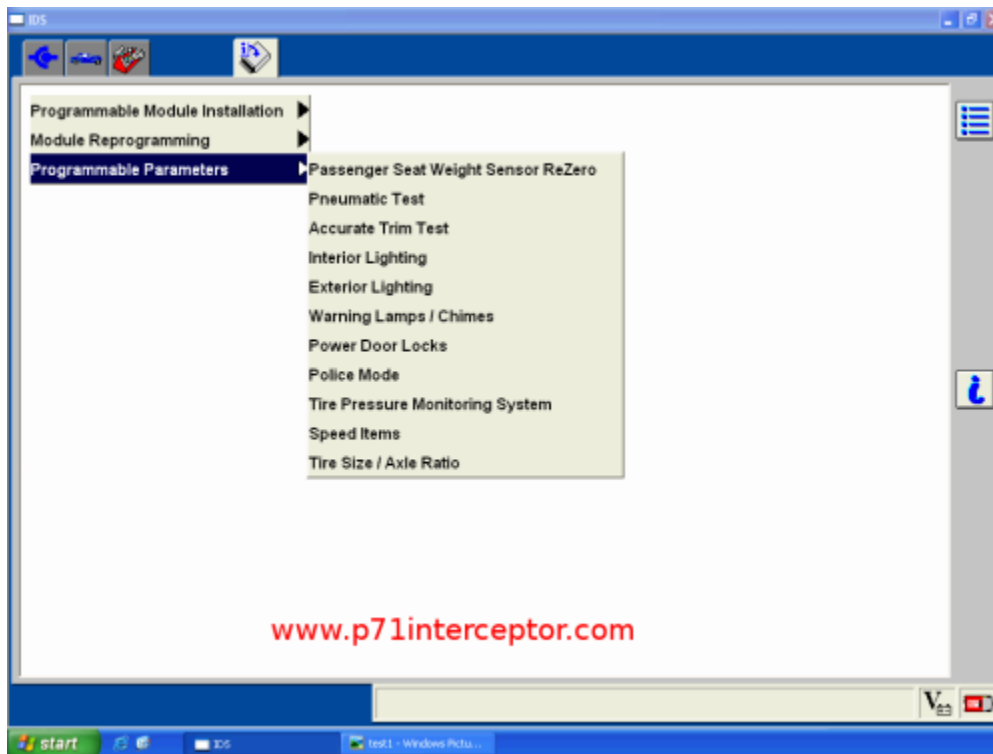
And the Exterior Lighting screen



Do not enable the Daytime Running Lamps feature unless you have the drl module present under the hood. Canadian vehicles usually have this module factory installed. Vehicles for the United States market usually don't.



Let's take a look at the "Power Door Locks" screen



If the vehicle is in active police use, you'll probably want to leave these features disabled. If you're using the car for civilian use, you can enable them if you want.

Smart Unlock

The smart unlock feature prevents the driver door from locking with the key in the ignition lock cylinder. When the vehicle security module receives a LOCK command from a door lock control switch, and the key is in the ignition lock cylinder with the driver door open, the vehicle security module commands the driver door to UNLOCK.

With the key in any ignition position, and either the driver's or passenger's door open, the doors cannot be locked using the power door lock switches.

The vehicle may still be locked with the key in the ignition, and performing one of the following actions:

- Pressing the manual lock button on the door.
- Operating the remote entry transmitter (if equipped).
- Operating the keyless entry keypad (if equipped).

- Operating the driver's door with a key.

Autolock

The autolock feature locks all the doors when all the doors, including the liftgate, are closed, the brake pedal is pressed with the key in ON position, and vehicle speed then exceeds 8 kph (5 mph) or higher. This feature relocks the doors (if any doors were open) after the brake pedal is pressed, once all the doors are read as closed and vehicle speed then exceeds 8 kph (5 mph). Door ajar switches are wired directly to the vehicle security module. The autolock feature can be enabled/disabled through module configuration, the key, and the keyless entry keypad. The auto-lock feature also uses inputs from the key position, the brake pedal position (BPP) switch and vehicle speed.

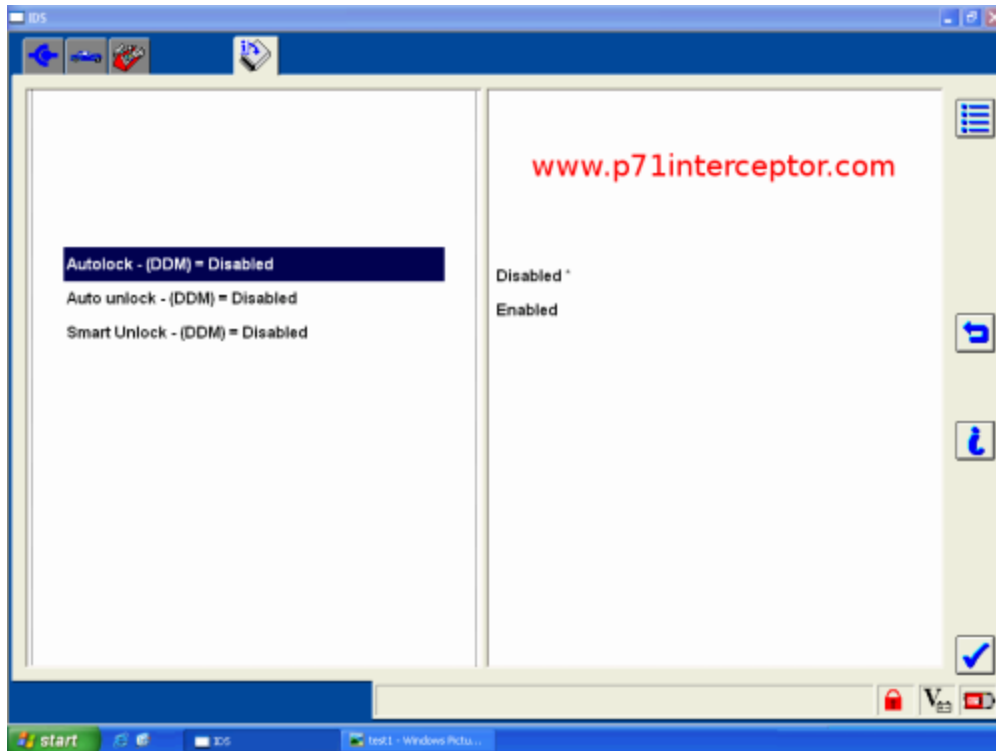
Auto-unlock

The auto-unlock feature will unlock all doors when:

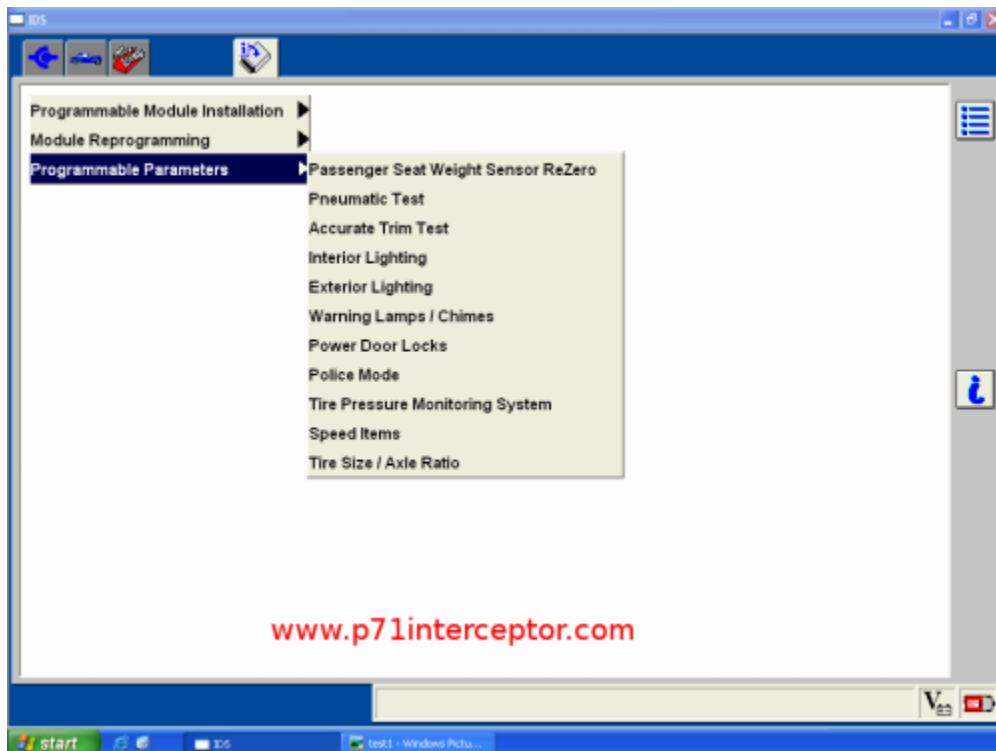
- the ignition has been in the on position, all doors are closed, and the vehicle has been in motion at a speed greater than 12 mph (20 km/h),
- the vehicle has then come to a stop and the ignition is turned to the accessory or off position, and
- the driver door is opened {within ten minutes after the ignition was transitioned to the accessory or off position}

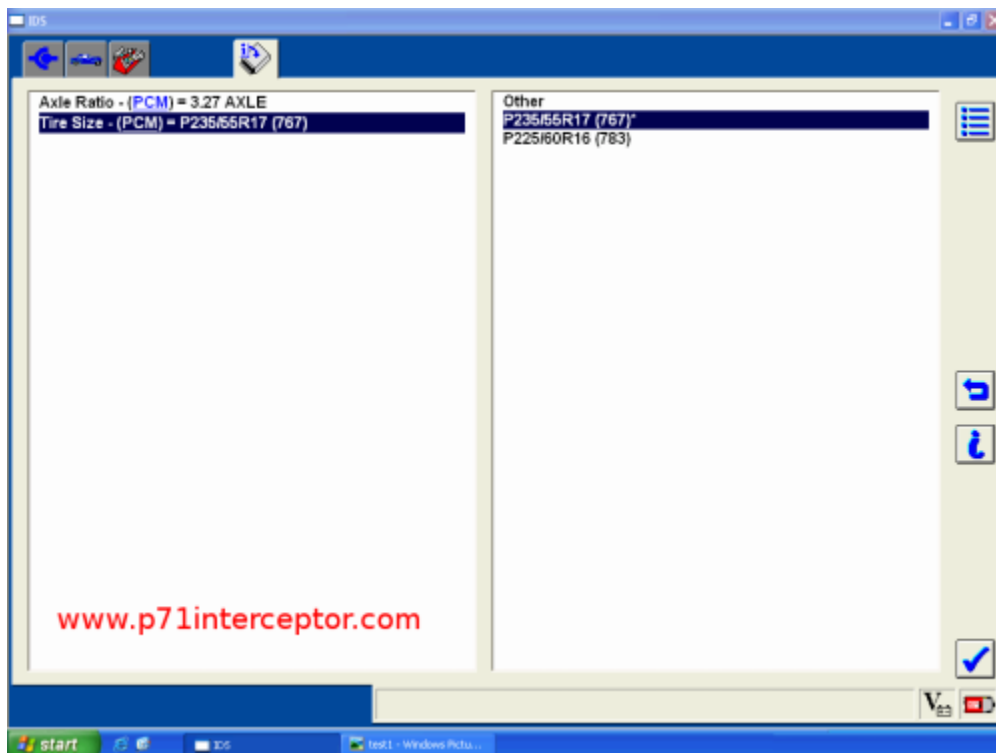
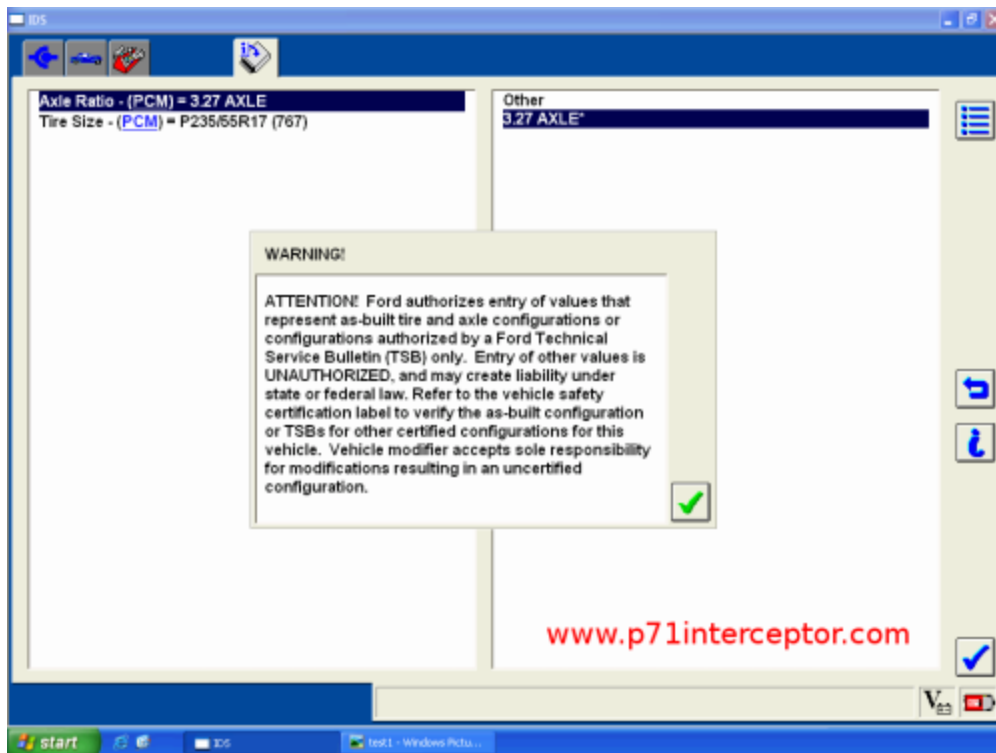
Note: The vehicle doors will not auto-unlock if the vehicle has been electronically locked prior to the driver door being opened.

The Drivers Door Module (DDM) was first installed into police interceptors starting in the 2006 model year. If you have a 2005 or earlier police cruiser, you will not have the smart unlock, autolock or auto-unlock options to change.

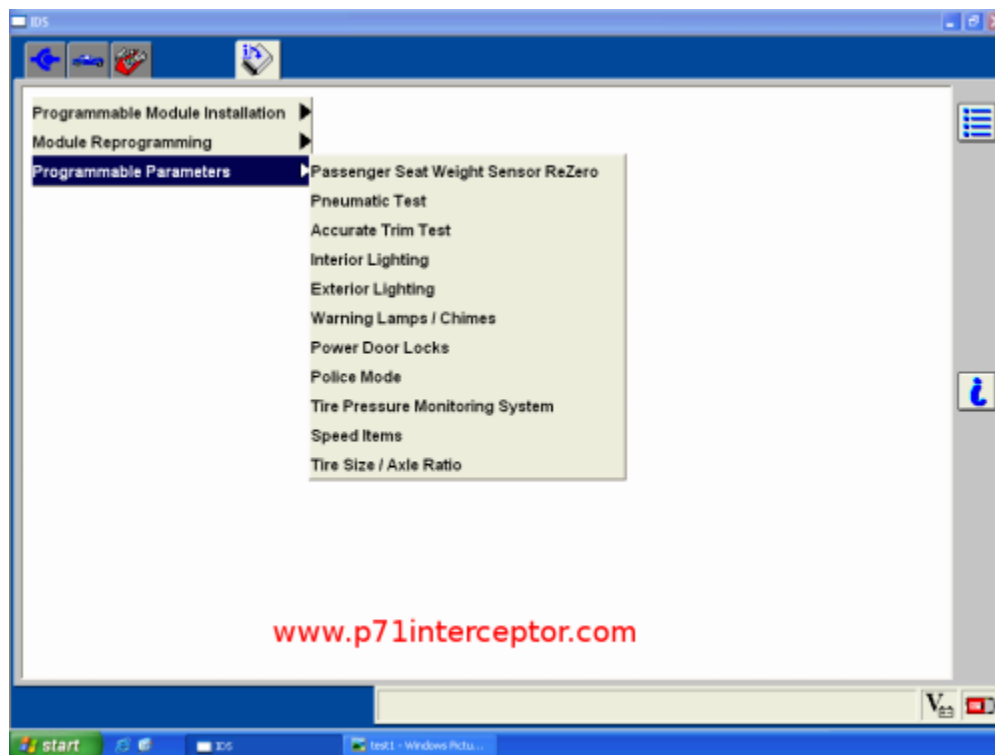


And let's take a look at the Tire Size / Axle Ratio Menu

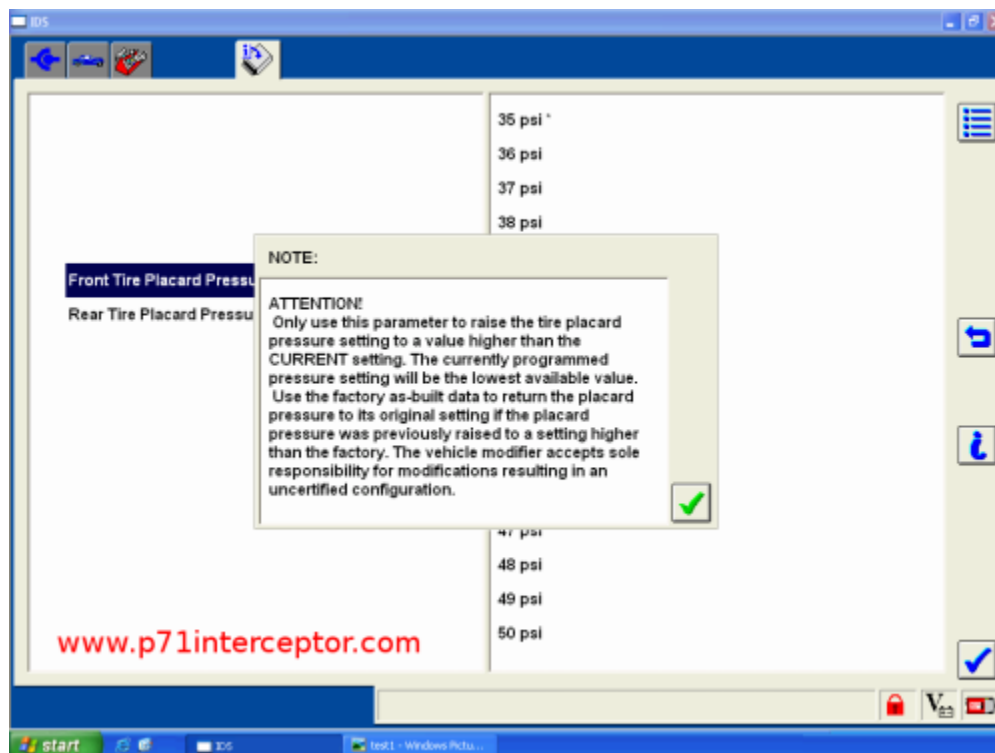


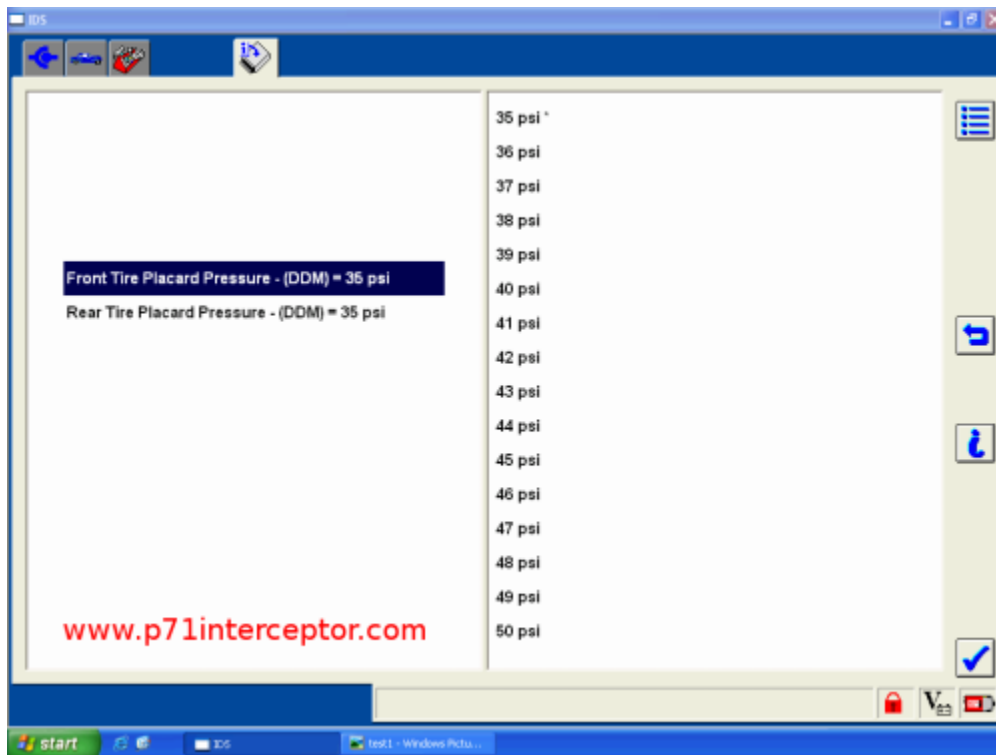


And the Tire Pressure Monitoring System screen. The TPMS system is a new feature for the 2008 model year.

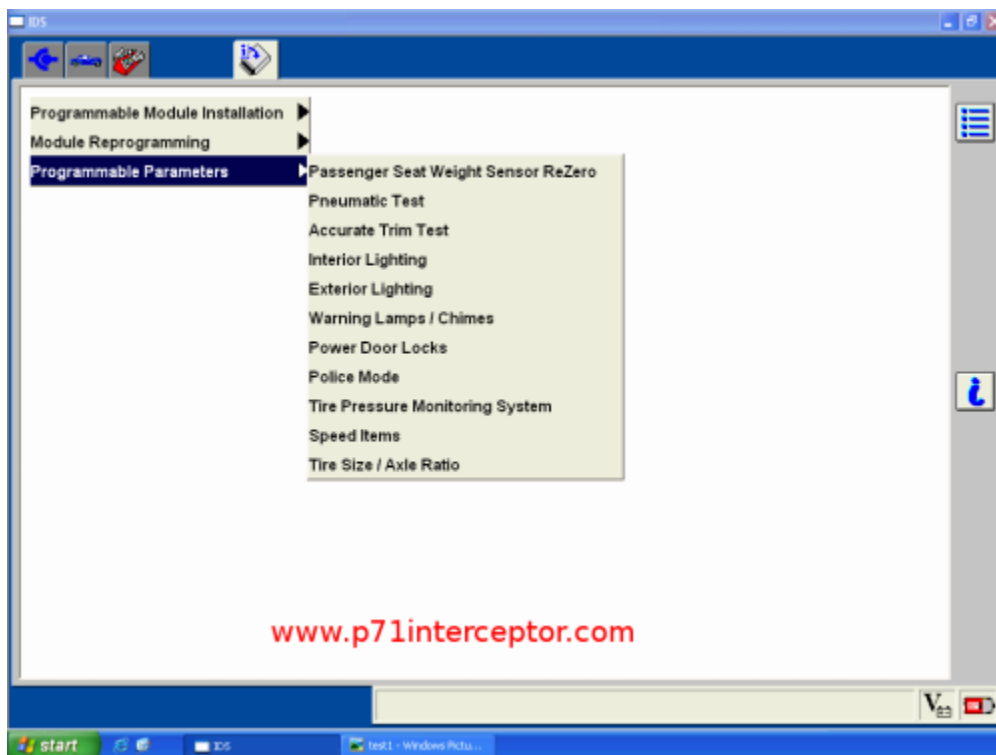


We can set the minimum tire pressure higher, but we can't lower it



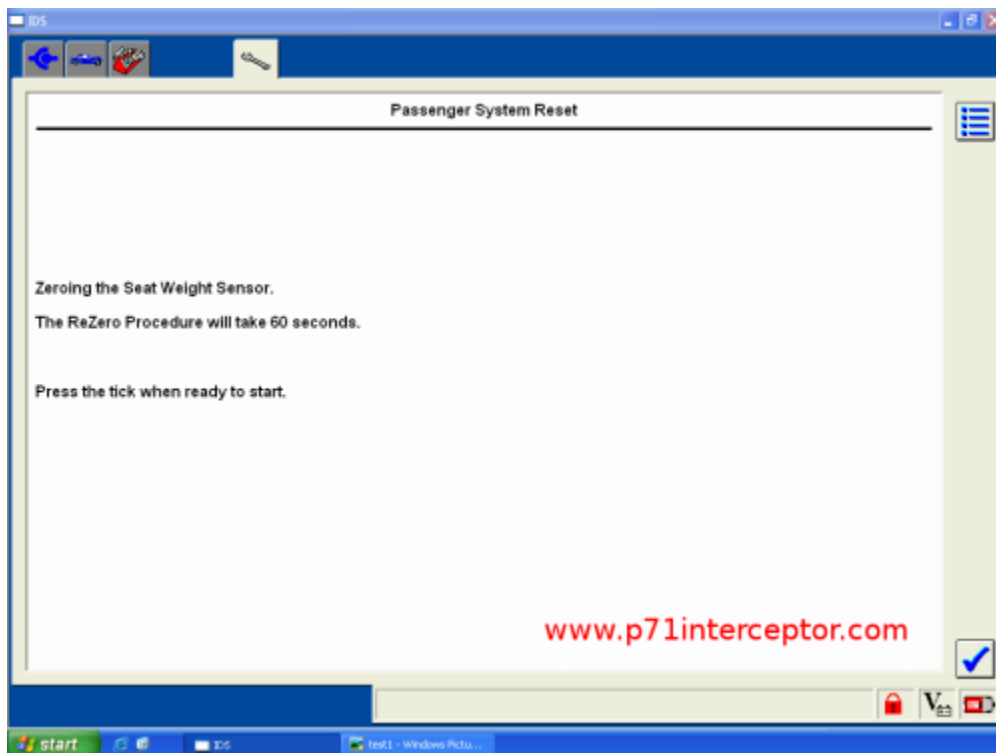


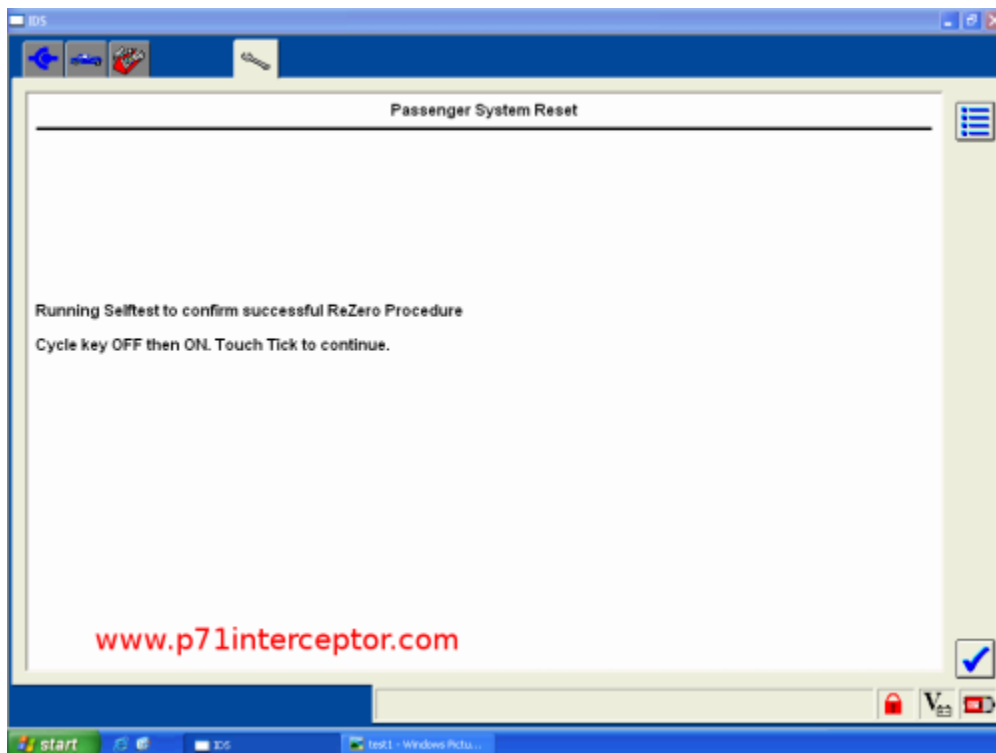
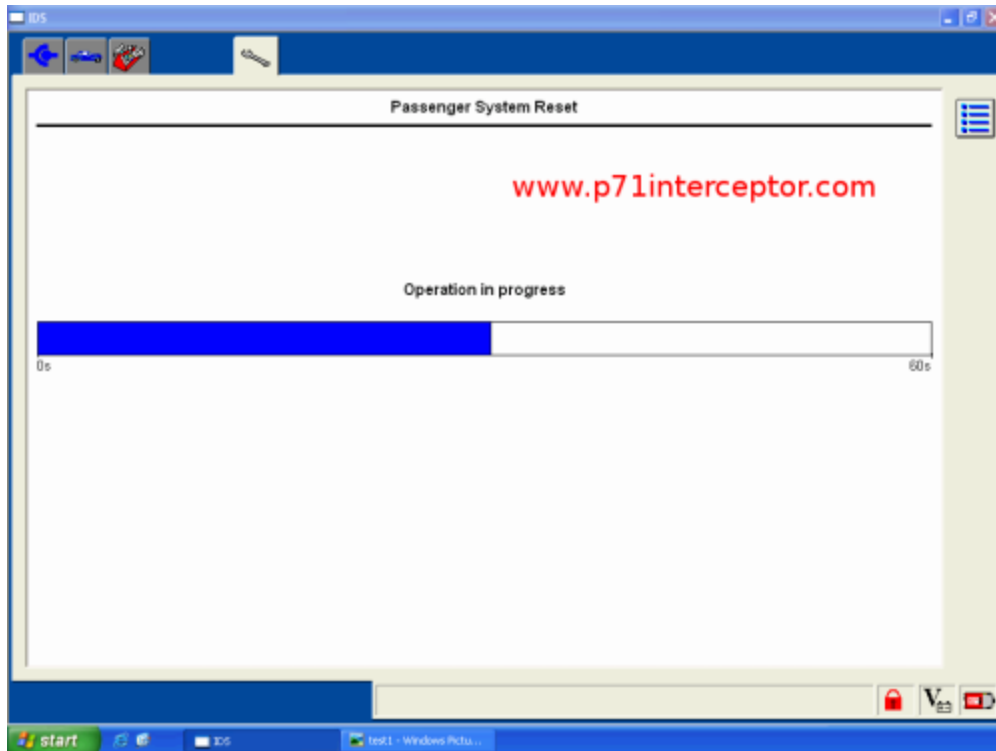
Let's take a look at the "Passenger Seat Weight Sensor ReZero" screen

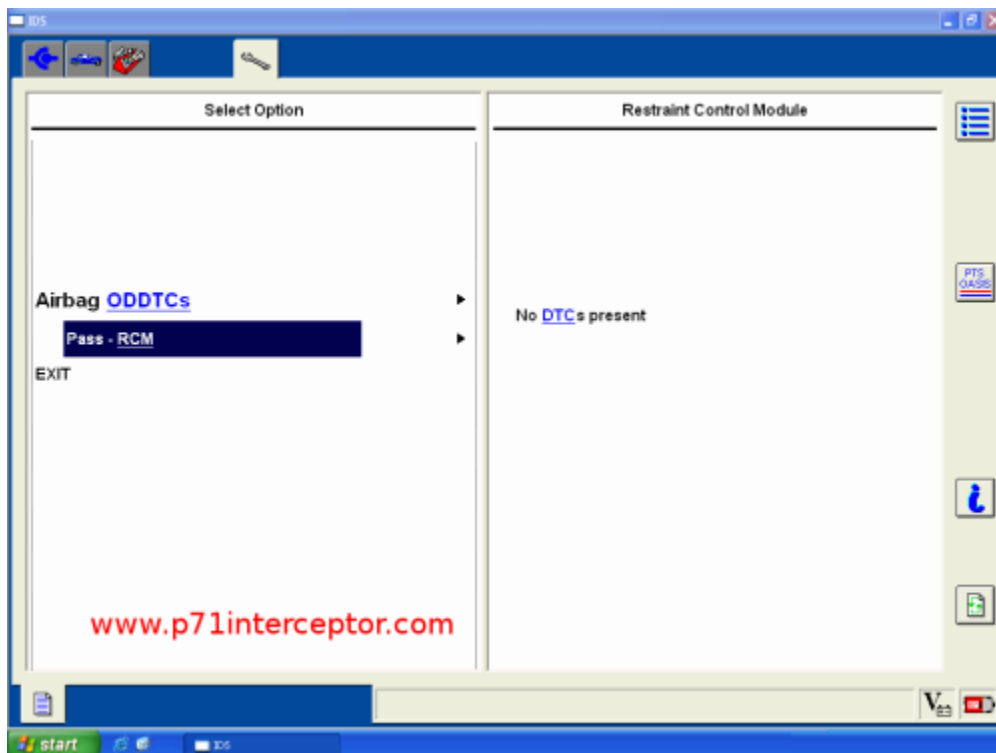
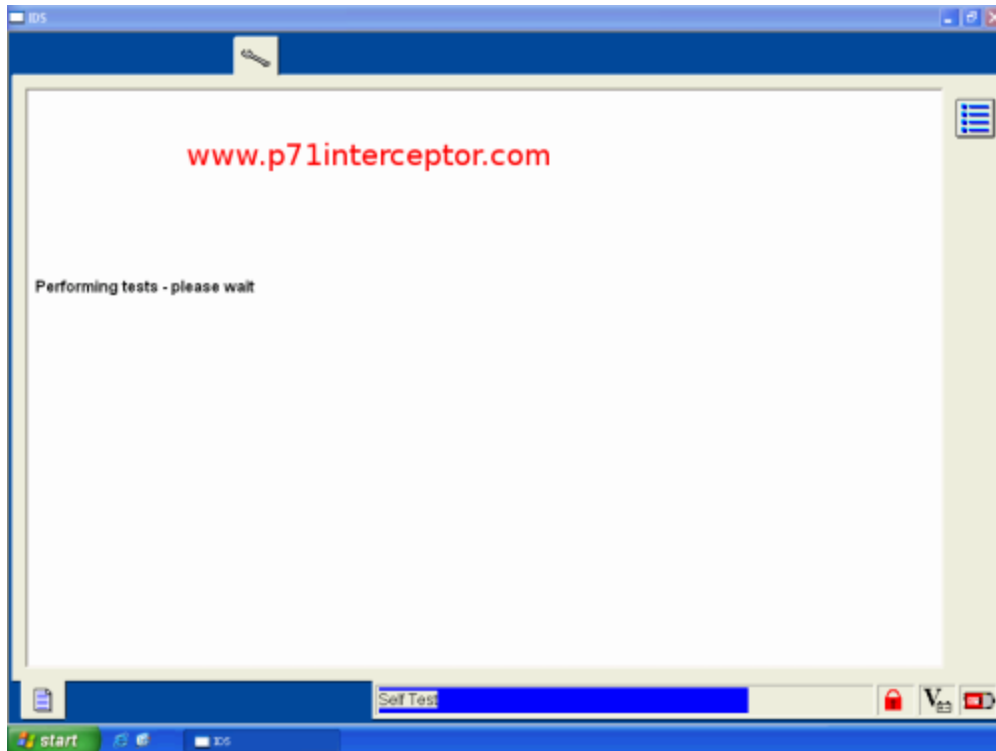


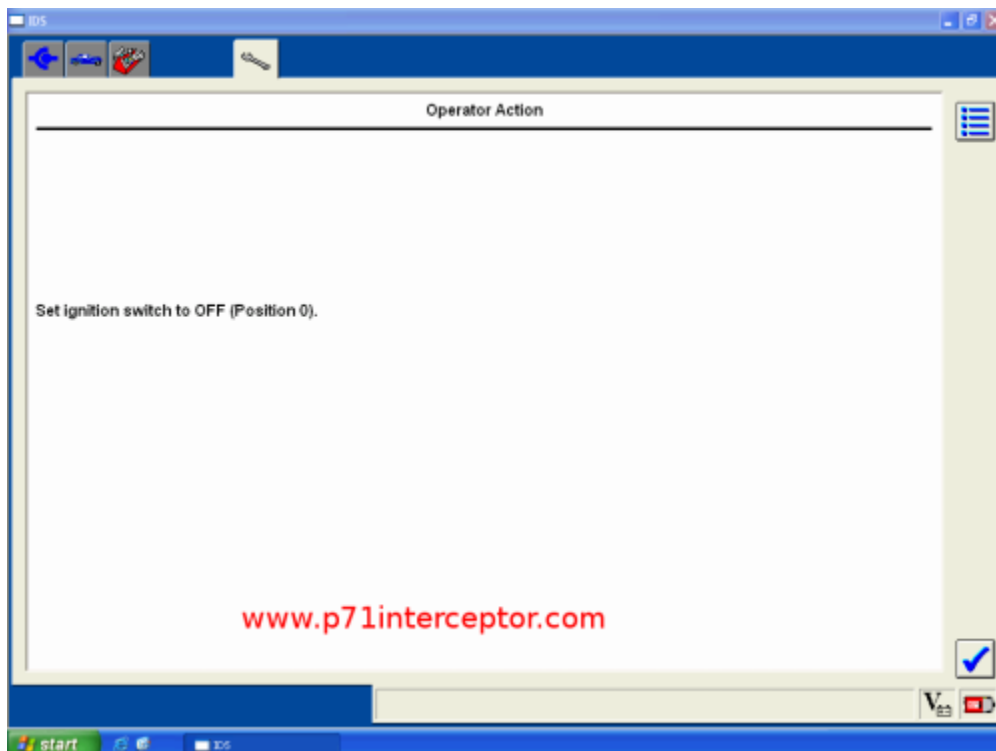
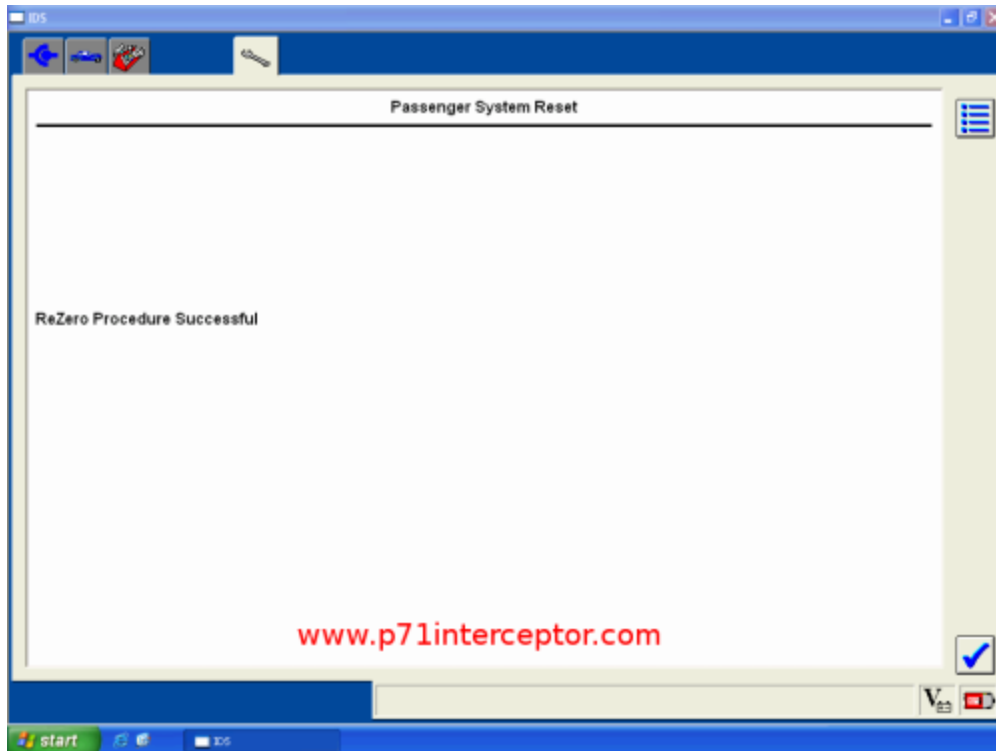
This section of the ids program is used after installing new passenger seat weight sensor components or after installing a different passenger seat assembly. If this procedure is not completed after those tasks, the airbag system might not work properly and the airbag warning light on the instrument cluster might be illuminated.



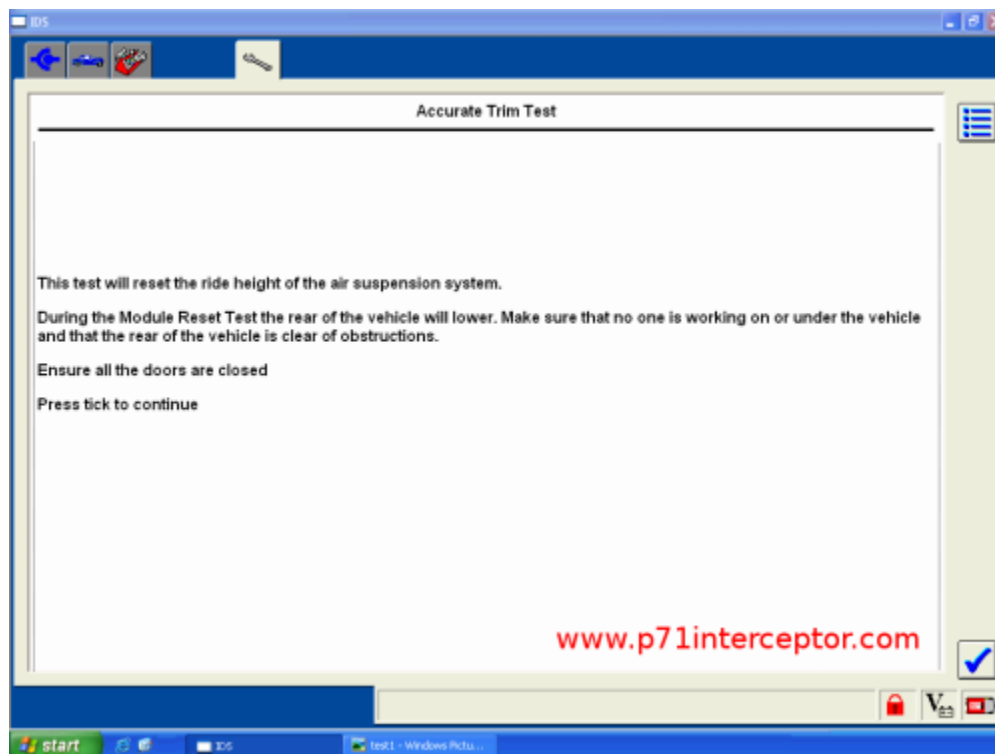
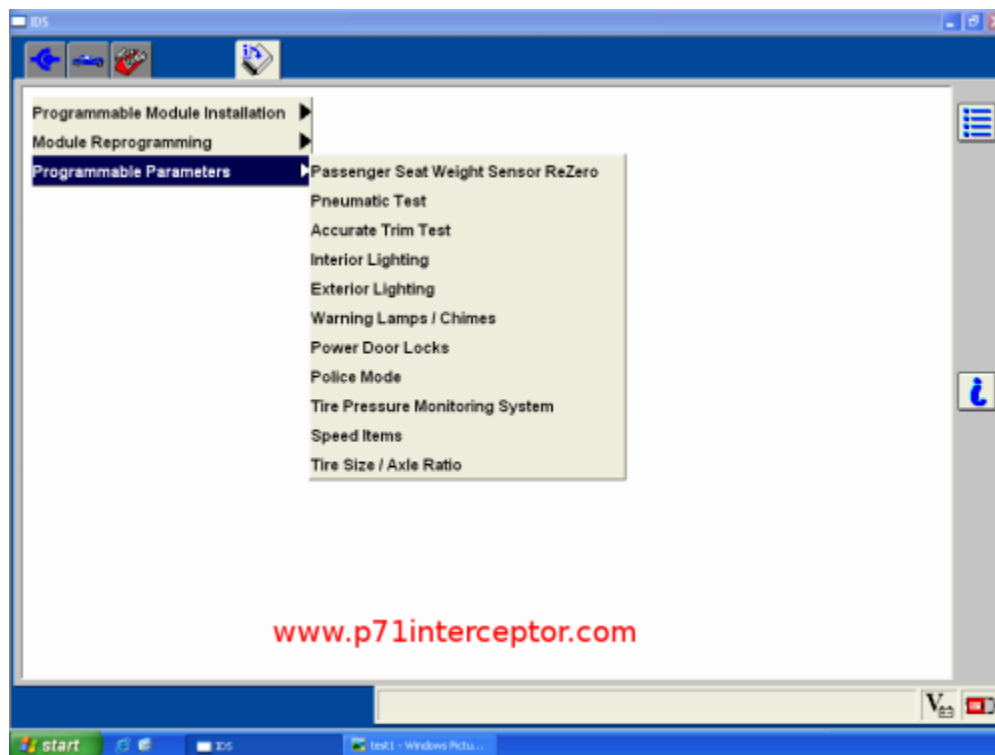




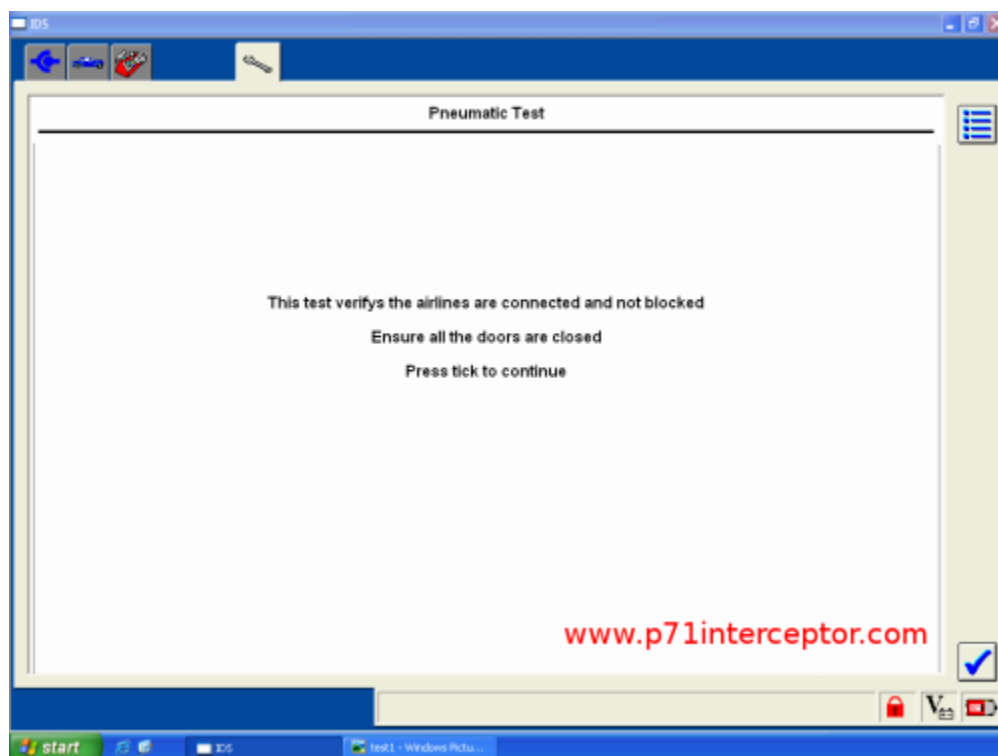
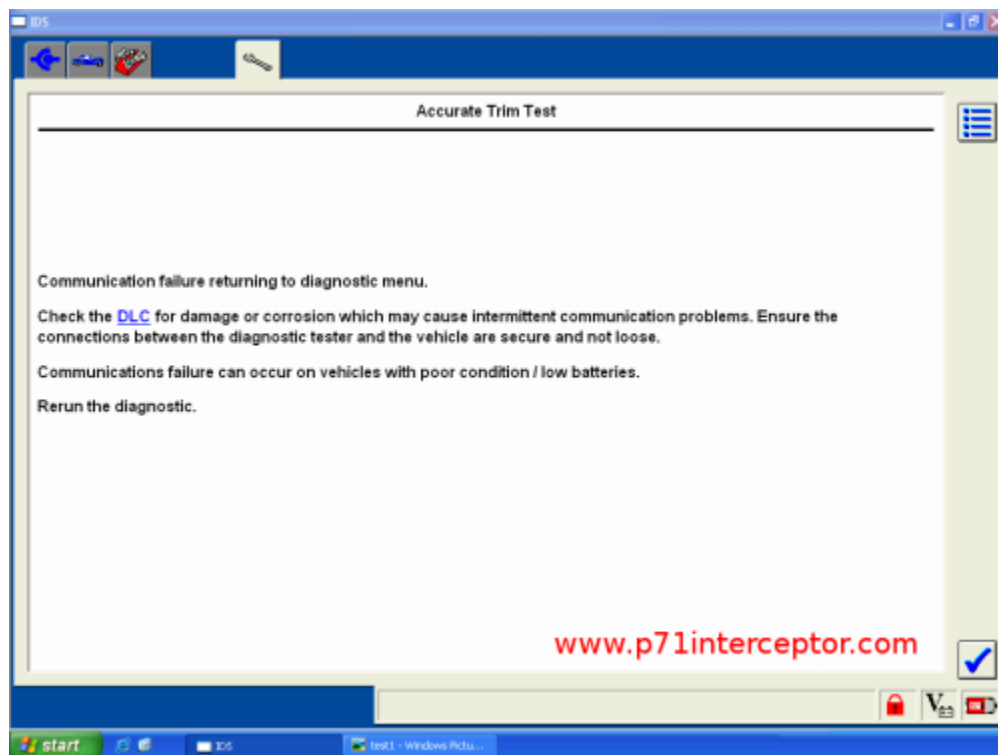




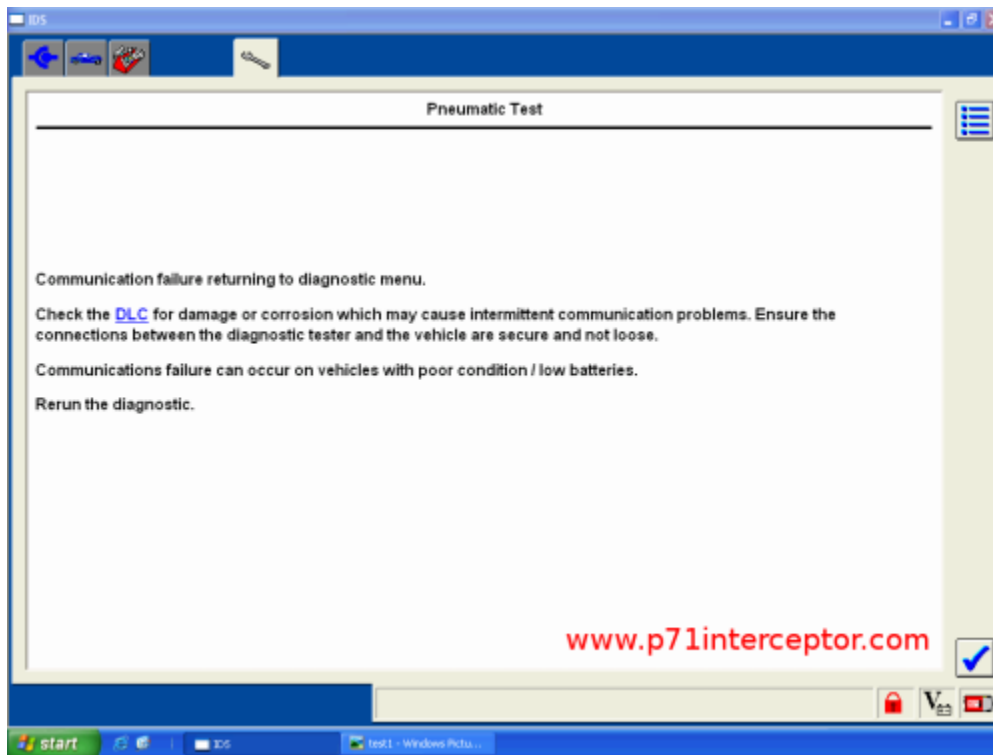
The accurate trim test isn't applicable to this vehicle, since the rear suspension uses conventional metal coil springs rather than air springs



For some reason, the ids scantool has trouble connecting with a non-existent module



Again, the scantool has trouble communicating with a non-existant module



Do be warned that enabling speed control in the pcm changes the vid block. So if you're using a superchips custom programmer, your vin locked programmer may no longer work with your vehicle.

Question & Answer

Can I purchase a VCM to use on my own car?

Yes. But the VCM unit costs around \$3,000 upfront to purchase. And after 2 years, you need to pay \$500/year to obtain an activation code for continued VCM functionality.

I found a VCM module on ebay for only \$999 shipped to me from HongKong, will this work with my car?

What you've likely found is a counterfeit vcm module clone. Ford is aware of these counterfeit units and has taken steps to make sure that the current IDS program will not function properly with them.

What hardware is required to run the IDS program?

Most laptop computers with windows xp professional installed should be able to run the IDS program. However, ford encourages the use of the Panasonic Toughbook CF-18 and the Panasonic Toughbook CF-19 for durability reasons. Do note that the IDS program is not compatible with Windows Vista or Windows 7.

Can I disable police darkmode without using the ford IDS scantool?

The commands to disable police darkmode are suspected to be CAN bus messages. If you have the proper hardware, you might be able to sniff the IDS data packets to disable police darkmode on one car, and then replay the police darkmode disable CAN bus messages on another car. However, this method won't work to enable cruise control because this requires a complete reprogram of the pcm strategy.

Why is my local franchised ford dealership telling me that it is impossible to retrofit cruise control into my crown victoria?

Because ford motor company never released an official cruise control retrofit kit for these cars.

Is my local ford dealer obligated to use their IDS tool to enable cruise control in my car's pcm if I show them this webpage?

No. However, if you find a cooperative dealer, they likely will. Do note that you might have to call around to a few different ford dealers before you find one willing to tackle this project.

How much money will my local ford dealer charge to enable cruise control in my car's pcm?

Many ford dealership service departments have a 1 hour minimum for customer pay repairs. So with prevailing labor rates, figure around \$100 for this task.

I had the local ford dealer disable police darkmode and my domelights still don't turn on when I open the drivers door. Why is this?

This is likely because the police department that owned your car cut the wiring in

between the driver's door ajar switch and the lighting control module. To get functional domelights, you will need to locate the cuts in the wiring and splice the hacked wires back together.