

SAFETY ADVICE

Ford and Nick Jr.'s Blue's Clues have teamed up to educate kids and parents about safety. Join us at www.clueintosafety.com for fun safety games and lessons.

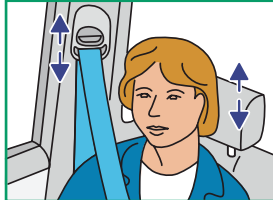


This card highlights some important automobile safety practices.

See Owner Guide for further instructions.



Safety Belts are *STILL* your #1 Safety Device. **BUCKLE UP. . . PROPERLY!** Guide the safety belt so that it fits tightly and low across your hips, not around the waist. Never place the shoulder belt behind back or under arm.



Adjust the height* of the shoulder belt so that the belt rests across the middle of your shoulder. Adjust the head restraint* so that its center is at the top of your ears or as close to this position as possible.



Never hold a child on your lap while the vehicle is moving. In a crash, the child is not protected from injury or ejection and is at risk during airbag inflation. Never use a safety belt to restrain more than one person.



REAR FACING INFANT SEAT



FORWARD FACING CHILD



BOOSTER SEAT

With children, it may not be possible to get a proper fit using adult safety belts alone.

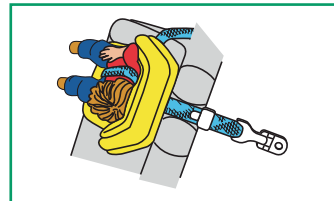
That is why child safety seats and boosters are so important.

Properly restrain children age 12 and under in the rear seat whenever possible.

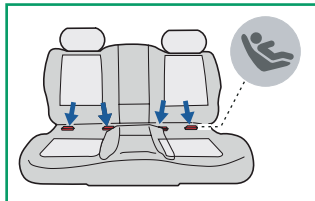
- Infants should always ride in a child safety seat facing the rear until they are at least 1 year old. Select a child seat with appropriate weight limit.
- Restrain children rear-facing as long as possible. Forward facing child seats may be used after a child is 1 year old and weighs between 22-40 lbs (10-18 kg).
- Properly restrain children weighing over 40 lbs (18 kg) using a booster seat, which has a shorter and higher cushion, to achieve proper fit of the lap belt on the hips, and the shoulder belt over the middle of the shoulder. Use a booster seat until proper fit of safety belts is achieved (around 4'9" tall).
- Whenever installing a child safety seat or booster seat, read and follow the manufacturer's instructions.



Loose installation is the #1 misuse of child seats. For proper installation, push down on the safety seat with your full weight to get the belt really tight. Make sure your belt is tight and locked - See Owner Guide.



Top tether straps help keep forward-facing child safety seats firmly in place. See Owner Guide for tether anchor locations and instructions. For most 1989 and newer models, see your Ford dealer for a **FREE** tether anchor installation, if not already equipped.



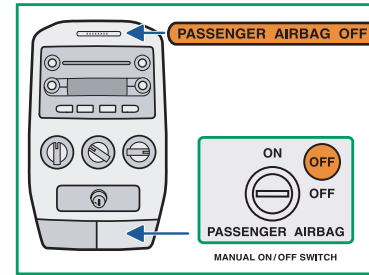
LATCH anchors* are located along the back edge of the rear seat cushion. Attach a LATCH-compatible child seat to the appropriate lower anchors, and attach the top tether strap.

* If Equipped



KEEP THIS CARD IN GLOVE BOX

Some vehicles are equipped with an automatic and/or manual Passenger Airbag Deactivation System.



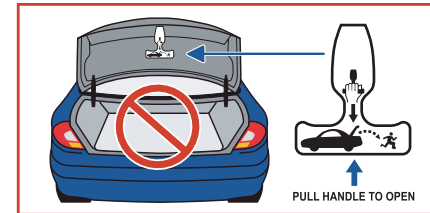
Automatic Systems

- If equipped with an automatic system, the "Passenger Airbag Off" light will be unlit for properly seated adults (airbag on) or unlit for an empty seat (airbag off).
- The "Passenger Airbag Off" light will be lit (airbag off) for smaller people and properly restrained child safety seats.
- Even with automatic on/off system, properly restrain children age 12 and under in the rear seat whenever possible.

Manual Systems

- If equipped with a manual airbag on/off switch, the "OFF" light will be lit at all times when the switch is turned to off.
- Never place rear-facing child safety seats in the front passenger seat unless the switch is turned to off and the "OFF" light is illuminated.

For the best protection drivers and front seat passengers should always wear safety belts and maintain proper sitting position with the seat back within 1 or 2 notches from upright and with your back against the seat. Never place objects, and avoid placing arms or hands, over the airbag cover.



Teach children not to play in vehicles. Keep keys out of a child's reach and keep doors and trunks locked – they could lock themselves in. Interior and trunk temperatures rise very quickly on hot days – even a short exposure to high temperatures can cause heat-related injuries, including brain damage and death. Familiarize yourself with the interior trunk release.*



To help maintain control of your vehicle, avoid sharp steering maneuvers and excessive speeds. SUVs, vans and trucks may handle differently than a car, particularly when loaded. Drive responsibly.

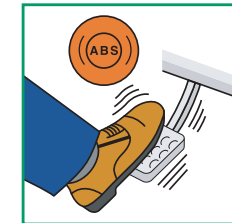


A driver's first responsibility is the safe operation of the vehicle. The most important thing you can do to prevent a crash is to avoid distractions and pay attention to the road. Wait until it is safe to make and receive phone calls.



Tire maintenance is important for the safe handling of your vehicle –

- Visually inspect tires for inflation and wear every time you approach your vehicle.
- Check your tire pressure monthly after tires have been resting at least one hour.
- Refer to the fuel fill door or door jamb for recommended tire pressure.
- Rotate and maintain tires regularly to optimize tire wear.
- Replace tires when they are worn or damaged.
- Stay within your vehicle's load limits.



The Anti-lock Brake System (ABS)* helps you maintain control of your vehicle when braking on slippery road surfaces. If the brake pedal pulses, do not release it – this is normal ABS operation. If you have ABS, the indicator light momentarily illuminates when the ignition is turned ON.

* If Equipped

© 2001 Viacom International Inc. All rights reserved. Nickelodeon, Blue's Clues and all related titles, characters and logos are trademarks of Viacom International Inc.



Why Wear Safety Belts?



- 37,000 crashes every day
- Belts help prevent ejection
- Kids follow our example
- Belts position us for best air-bag performance
- Belts reduce risk of death 45% in front seat



Ford BeltMinder™ reminds us to Buckle Up.

And remember, NEVER drink and drive.

Copyright © 2001 Ford Motor Company www.ford.com

4U5A-19B146-AA