



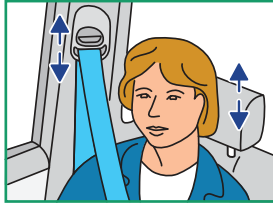
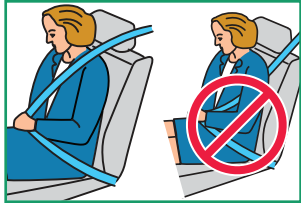
# SAFETY ADVICE

Ford and Nick Jr.'s Blues Clues have teamed up to educate kids and parents about safety. Join us at [www.clueintosafety.com](http://www.clueintosafety.com) for fun safety games and lessons.



This card highlights some important automobile safety practices.

See Owner Guide for further instructions.



Safety Belts are *STILL* your #1 Safety Device. **BUCKLE UP . . . PROPERLY!** Guide the safety belt so that it fits tightly and low across your hips, not around the waist. Never place the shoulder belt behind back or under arm.

Adjust the height\* of the shoulder belt so that the belt rests across the middle of your shoulder. Adjust the head restraint\* so that its center is at the top of your ears or as close to this position as possible.

With children, it may not be possible to get a proper fit using adult safety belts alone.

That is why child safety seats and boosters are so important.



REAR FACING INFANT SEAT



FORWARD FACING CHILD



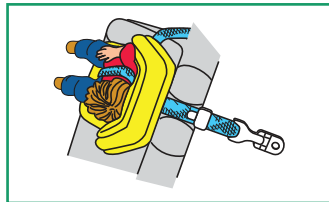
BOOSTER SEAT

Children 12 and under should always be properly restrained in the rear seat whenever possible.

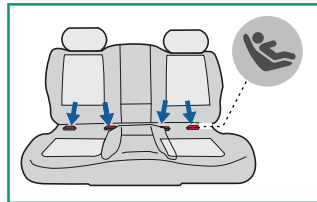
- Infants should always ride in a child safety seat facing the rear until they are at least 1 year old. Select a child seat with appropriate weight limit.
- Children over 1 year old and weighing 22-40 lbs. (10-18 kg) may "graduate" to a forward facing child safety seat.
- Children over 40 lbs. (18 kg) should "graduate" to a booster seat which has a shorter and higher cushion, to achieve proper fit of the lap belt on the hips, and the shoulder belt over the middle of the shoulder. Even at age 8, many children may not yet be tall enough to use adult safety belts alone.
- Whenever installing a child safety seat or booster seat, read and follow the manufacturer's instructions.



Loose installation is the #1 misuse of child seats. For proper installation, push down on the safety seat with your full weight to get the belt really tight. Make sure your belt is tight and locked - See Owner Guide.



Top tether straps help keep forward-facing child safety seats firmly in place. See Owner Guide for tether anchor locations and instructions. For most 1989 and newer models, see your Ford dealer for a **FREE** tether anchor installation, if not already equipped.



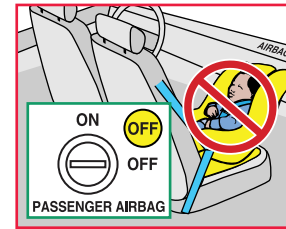
LATCH anchors\* are located along the back edge of the rear seat cushion. Attach a LATCH-compatible child seat to the appropriate lower anchors, and attach the top tether strap.



Raising kids with safety in mind  
[www.boostamerica.org](http://www.boostamerica.org)

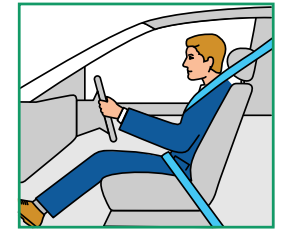


Never hold a child on your lap while the vehicle is moving. In a crash, the child is not protected from injury or ejection and is at risk during airbag inflation. Never use a safety belt to restrain more than one person. See other side of this card for proper restraint of children in vehicle.

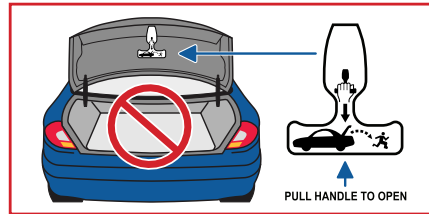


Airbags inflate quickly and with force. You can reduce the risk of inflation related injury.

Never place rear-facing child safety seats, or children 12 and under, in the front passenger seat if vehicle is equipped with a passenger's airbag, unless the airbag is turned off and the "off" light is illuminated.\*



For drivers and front seat passengers, move the seat as rearward as practical. Keep the seat back within 1 or 2 notches from upright and sit with your back against the seat. Never place objects, and avoid placing arms or hands, over the air bag covering.



Teach children not to play in vehicles. Keep keys out of a child's reach and keep doors and trunks locked - they could lock themselves in. Interior and trunk temperatures rise very quickly on hot days - even a short exposure to high temperatures can cause heat-related injuries, including brain damage and death. Familiarize yourself with the interior trunk release.\*



To help maintain control of your vehicle, avoid sharp steering maneuvers and excessive speeds. SUVs, vans and trucks may handle differently than a car, particularly when loaded. Drive responsibly.

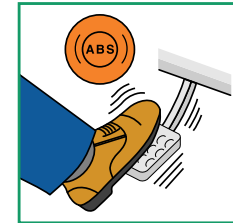


A driver's first responsibility is the safe operation of the vehicle. The most important thing you can do to prevent a crash is to avoid distractions and pay attention to the road. Wait until it is safe to make and receive phone calls.



Tire maintenance is important for the safe handling of your vehicle -

- Visually inspect tires for inflation and wear every time you approach your vehicle.
- Check your tire pressure monthly after tires have been resting at least one hour.
- Refer to the fuel fill door or door jamb for recommended tire pressure.
- Rotate and maintain tires regularly to optimize tire wear.
- Replace tires when they are worn or damaged.
- Stay within your vehicle's load limits.



The Anti-lock Brake System (ABS)\* helps you maintain control of your vehicle when braking on slippery road surfaces. If the brake pedal pulses, do not release it - this is normal ABS operation. If you have ABS, the indicator light momentarily illuminates when the ignition is turned ON.

Why Wear Safety Belts?



- 37,000 crashes every day
- Belts help prevent ejection
- Kids follow our example
- Belts position us for best air-bag performance
- Belts reduce risk of death 45% in front seat



Ford BeltMinder™ reminds us to Buckle Up.

And remember, NEVER drink and drive.

\* If Equipped

Ford Motor Company

© 2001 Viacom International Inc. All rights reserved. Nickelodeon, Blue's Clues and all related titles, characters and logos are trademarks of Viacom International Inc.

Copyright © 2001 Ford Motor Company [www.ford.com](http://www.ford.com)

\* If Equipped

Ford Motor Company

KEEP THIS CARD IN GLOVE BOX

3U5A-19B146-AA